

Standing OVATION

Presented by:

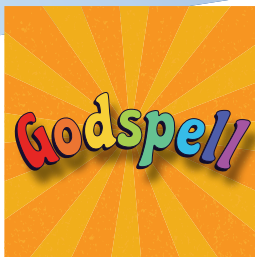


Sponsored by:



Phyllis Mumford-Sovern
& Kent Sovern

Jan & Layton Stump
Edward & Nancy Truslow



JULY 9-11, JULY 22-25, &
AUG. 5-8, 2021



JULY 16-18, &
JULY 29-AUG. 1, 2021



JULY 27, 2021



JULY 10, 17, 24, 31, &
AUG. 7, 2021

July 9 - Aug 8, 2021



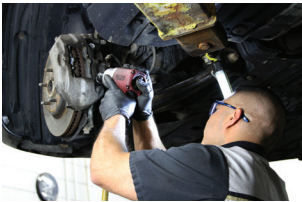
THE PLAYHOUSE

#DMPlayhouse



WILLIS AUTOMOTIVE

DRIVING THE ULTIMATE GUEST EXPERIENCE



WILLIS PRE-OWNED



WILLIS COLLISION



WILLIS AUTO SPA
& ACCESSORIES

POWERSPORTS

BIG TIRES

2121 NW 100TH STREET | DES MOINES | IA 50325 | (515) 253-9600 | WILLISAUTO.COM

Welcome to your Playhouse!



David R. Kilpatrick
Executive Director

Do you remember where you were this time last summer? We were here in this parking lot, presenting Live Theatre Drive-in. It was a special event for all who participated as we gathered, tenuously, yet we laughed and shared our experience together.

One year later, The Playhouse explored how to capture the fun of a summer experience yet do it better. Thus, Tent Theatre was formed. We can gather, share a story or two, and enjoy wonderful theatre in a relaxing and fun environment. Thank you for choosing to join us.

I hope that you have so much fun today that you will come back to experience all our summer offerings. The Playhouse goal is to serve our whole community. This summer we include something for our younger audiences with *PolkaDots: The Cool Kids Musical* as well as something for our audiences who remember what a radio was with *FAE Rides Again*. We also have a classic comedy, *Plaza Suite* by Neil Simon (who wrote *The Odd Couple* among many other favorites), and of course a musical for the whole family, *Godspell*, which debuted in 1971 and had a successful revival and update in 2012. Each of these productions promises to be an event to remember.

Our 103rd Season is just around the corner with musicals, plays, world premieres, playfests, and a holiday classic. Compared to this time last year, it is exciting to be able to look ahead and make plans, knowing that you will be getting our best whenever you attend The Playhouse. Go ahead and test us! Try them all and let us know what you think.

Theatre is a special art form that requires the artists and audience to share the experience as it evolves. Theatre is about what is happening in the present. Theatre is about being together. Know that we couldn't keep theatre alive and well without you and we can't thank you enough for playing your part.

Here's to a fun and event-filled summer that remains safe and comfortable. We'll see you next time at the theatre, indoors once again!



JOIN US FOR AN EVENING OF FUN UNDER THE TENT
PAVILION PARTY

The Playhouse is grateful to the generous sponsors and hardworking committee who made our "Pavilion Party" a smashing success on June 29.

MARQUEE SPONSORS (\$2,500)

- Bankers Trust
- EMC Insurance Companies
- Hy-Vee
- Prairie Meadows
- Mark C. Smith & Artis Reis

PAVILION SPONSORS (\$1,000)

- Cory & Emily Abbas
- Sarahbeth & William Anderson
- Jennifer & TJ Bryant
- Jim & Janine Clark
- John Fisher & Jann E Freed
- Angela & Terry Gallagher
- Lynn & Steve Graves
- Darca Boom & Dennis Klein
- Phyllis Mumford-Sovern & Kent Sovern
- Gerry & Mary Lou Neugent
- Suku & Mary Radia

CANOPY SPONSORS (\$500)

- Anonymous
- Jan Burch & Robert Mitchell
- Carrie & Craig Dostal
- Gloria & Art Fiean
- Rosalie Gallagher
- Tom & Cathy Goldman
- Dr. James & Mary Ellen Kimball
- Dick & Susie McCauley
- Rod & Julie McCullough
- Aaron Moon & Joey Taylor Moon
- Jeff & Susan Stroud
- Marc & Evon Swanson
- Jeanette Webb
- David & Barbara White

AUCTION DONORS

- Connie & Ted Boesen
- Bubba | Southern Comforts
- Casey's
- The Cheese Shop
- Janelle Holmes
- Iowa Culinary Institute at DMACC
- Image Solutions
- La Mle Bakery
- Liz Lidgett Art Gallery
- Greg & Carol Millar
- Dave Miller & Melissa Chavas-Miller
- Prairie Meadows
- Scheel's
- Signature Salon
- Stam Chocolate
- Toad Valley Golf Course





THE PLAYHOUSE 2021-22 SEASON

CAST LIST

644th Production
102nd Season

Opening July 9, 2021
Closing August 8, 2021

Des Moines Community Playhouse Presents a Tent Theatre Series

GODSPELL

Conceived and Originally Directed by John-Michael Tebelak
Music and New Lyrics by Stephen Schwartz
Originally Produced on the New York Stage by Edgar Lansbury /
Stuart Duncan / Joseph Beruh

Presented by **MidAmerican Energy Company**
Sponsored by **Lincoln Savings Bank, Phyllis Mumford-Sovern
& Kent Sovern, Jan & Layton Stump, Edward & Nancy Truslow**

Director/Artistic Director: **Katy Merriman**
Music Director: **Brenton Brown**
Choreographer: **Megan Helmers**
Set Designer: **Alex Snodgrass**
Costume Designer: **Angela Lampe**
Lighting Designer: **David R. Kilpatrick**
Sound Designer: **Tim Harris**
Properties Designer: **Allyson Braun**
Assistant Music Director: **Sara Kottra**
Assistant Choreographer: **Grace Ammann**
Stage Manager: **Jada Smith**
Assistant Stage Manager: **Ellie Wellman**

Cast

In Order of Appearance
★Indicates Playhouse Debut

Jesus..... **Peter Noll**
Judas/John the Baptist **Nathaniel Han★**

Ensemble

The ensemble of disciples uses their own names in this story. Like Jesus' disciples, they come as they are.

Patrick Carew
Alexis Castro★
Mar Feitelson★
Shelby Kephart
Abigail Phelps★
Kaylee Reininga
Sophie Rounds
Marisa Spahn
Caroline Walton

Godspell is presented with a 15-minute intermission.

Godspell - 2012 Revised Version is presented through special arrangement with Music Theatre International (MTI).
All authorized performance materials are also supplied by MTI. www.mtishow.com

ACT I

<i>Prologue</i>	Company
<i>Tower of Babbie</i>	Company
<i>Prepare Ye</i>	John the Baptist, Company
<i>Save the People</i>	Jesus, Company
<i>Day By Day</i>	Sophie, Company
<i>Learn Your Lessons Well</i>	Kaylee, Company
<i>Bless the Lord</i>	Marisa, Company
<i>All for the Best</i>	Jesus, Judas, Company
<i>All Good Gifts</i>	Alexis, Company
<i>Light of the World</i>	Abigail, Company

ACT II

<i>Learn Your Lessons Well (Reprise)</i>	Company
<i>Turn Back, O Man</i>	Caroline, Jesus, Company
<i>Alas for You</i>	Jesus, Company
<i>By My Side</i>	Shelby, Sophie, Marisa, Company
<i>We Beseech Thee</i>	Patrick, Company
<i>Beautiful City</i>	Jesus, Company
<i>On the Willows</i>	Judas
<i>Finale</i>	Jesus, Company
<i>Bows</i>	Company

“By My Side” music by Peggy Gordon and lyrics by Jay Hamburger

OH, HELLO,
GOOD TO
SEE
YOU AGAIN.

- RAYGUN

2021-22 Season

IN THE JOHN VIARS THEATRE

Cabaret

SEPT. 10-26, 2021

Escaping the Labyrinth

OCT. 15-23, 2021

AGATHA CHRISTIE'S

Murder on the Orient Express

FEB. 4-20, 2022

Singin' in the Rain

MAR. 25-APR. 10, 2022

Calendar Girls

JUNE 3-19, 2022

ROALD DAHL'S

Matilda The Musical

JULY 8-31, 2022

IN THE KATE GOLDMAN CHILDREN'S THEATRE

Junie B. in Jingle Bells, Batman Smells!

NOV. 5-14, 2021

Don't Let the Pigeon Drive the Bus! The Musical!

JAN. 7-23, 2022

Charlotte's Web

MAR. 4-20, 2022

Pippi Longstocking

APR. 22-MAY 8, 2022

FAMILY HOLIDAY CLASSIC

The Sound of Music

DEC. 3-19, 2021



831 42nd Street | Des Moines | 515.277.6261

TICKETS AT: [DMPlayhouse.com](https://dmplayhouse.com)

GODSPELL CAST NOTES



Patrick Carew (*Ensemble*) made his Playhouse debut in *Disney's Newsies* as a tumbling newsie. A few of his favorite roles have included Seymour in *Little Shop of Horrors* (Garner High School, IA) and Danny Zuko in *Grease* (Dylan Kaercher's Theatre Camp, Albert Lea, MN). Patrick is a sophomore at Luther College studying music education and musical theatre and is an education intern at The Playhouse working with this summer's theatre camps.



Alexis Castro (*Ensemble*) has had a massive interest in theatre ever since he was cast as Young Simba in the *Disney's The Lion King Jr.* at Des Moines Roosevelt High School, where he is a junior. His Roosevelt productions include *The 25th Annual Putnam County Spelling Bee* (Chip Tolentino), *The Addams Family*, and *12 Angry Jurors*. He was also in Des Moines Young Artists' Theatre's production of *13: The Musical*. Alexis is a proud first generation Mexican-American.



Mar Feitelson (*Ensemble*) is a sophomore at West Des Moines Valley High School. His area credits include *She Kills Monsters* (Chuck), *The Boy at the Edge of Everything* (Simon), *13: The Musical* (Eddie), *Hairspray Jr.* (Judine), *School of Rock* (Madison), and *Akeelah & the Bee* (Georgia) at Des Moines Young Artists' Theatre; and *Fun Home* (Small Alison) at Iowa Stage Theatre Company. In his free time, Mar loves to play basketball and play the drums and guitar.



Nathaniel Han (*Judas/John the Baptist*) is making his Playhouse debut this summer. While at Iowa State University, he appeared in *Little Women* (Professor Bhaer) and was co-assistant director/dramaturg for *Cabaret*. He performed in *Shakuntala* (Sage Durvasa) with Gateway Dance Theatre. Other area theatre experiences include violinist for *Shrek The Musical* at Actors Inc. (Ames) and stagehand at Iowa Stage Theatre Company. Nate's interests include

graphic design, animation, and parenting two cats, JoJo and Peri, with his partner, Albert Gomez.



Shelby Kephart (*Ensemble*) is familiar to Playhouse audiences from *Disney's Freaky Friday One Act* (Senorita O'Brien), *Catch Me If You Can*, and *Elf - The Musical*. At Urbandale Community Theatre, she has appeared in *Six-on-Six* and *State Fair*. Shelby works with Des Moines Public Schools Metro Kids and puts on shows for her students. She also sings with the choir and worship team at Heritage Assembly.



Peter Noll (*Jesus*) is a senior at the University of Iowa studying theatre arts and human physiology. His previous theatre experience includes *Hairspray Jr.* and *Bring It On* at Des Moines Young Artists' Theater, *Disney's Newsies* at The Playhouse, and *Hit the Wall* at the University of Iowa Theatre Department. When not onstage, Peter can be found cuddling with his two dogs or indulging in board games and vanilla lattes.



Abigail Phelps (*Ensemble*) is making her Playhouse debut. She is a recent Des Moines Roosevelt High School graduate where she created hair and makeup for the fall and spring shows all four years there. She was also in Roosevelt's production of *Disney's The Lion King Jr.* as Banzai. In her spare time, she plays music locally around Des Moines.



Kaylee Reininga (*Ensemble*) is a rising sophomore at the Boston Conservatory studying musical theatre. Her first production with The Playhouse was *Mamma Mia!* Additional musicals include *The Wizard of Oz* (Dorothy) at the Ankeny Community Theatre, *The Addams Family* (Wednesday Addams) at Des Moines Roosevelt High School, and *Hairspray Jr.* (Amber Von Tussle) and *Legally Blonde Jr.* (Vivienne) at Des Moines Young Artists' Theatre. Kaylee is a professional dog walker who loves running, painting, and gospel music.

GODSPELL CAST NOTES



Sophie Rounds (*Ensemble*) is currently attending Loyola University in Chicago, studying English and Spanish. Sophie's first performance at The Playhouse was *A Gentleman's Guide to Love and Murder*.

She has also been in *State Fair* (Jeanne) and *Smartypants: A New Musical* at Dowling Catholic High School. Sophie's interests and hobbies include writing, biking, and singing.



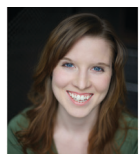
Marisa Spahn (*Ensemble*) grew up taking Playhouse summer classes and appeared on stage in *The Addams Family* (Wednesday Addams) and *West Side Story* (Anybods).

Other area productions include *Bring It On* (Campbell) at Des Moines Young Artists' Theatre; *Disney's Beauty and the Beast* (Babette) at Urbandale Community Theatre; and *Les Misérables* (Fantine) and *Legally Blonde* (Elle Woods) at Waukee High School. Marisa was in *Deadly: The Musical* (Julia) at Webster Conservatory (St. Louis, MO), where she is in her final year of her B.F.A. program in musical theatre.



Caroline Walton (*Ensemble*) is attending Texas Christian University, pursuing a B.F.A in musical theatre. Her first performance with The Playhouse was as a dancer in *A Chorus Line*. At Van Meter Theatre,

Cari played Roxie Hart in *Chicago* and Sharpay in *Disney's High School Musical*. She was also in *The Nutcracker*, *The Little Mermaid*, and *Pandora's Box* with Iowa Dance Theatre. Cari has performed at Des Moines Young Artists' Theatre in *Legally Blonde Jr.* (Margot) and was a dancer for *Children of Eden* at Texas Christian University.



Katy Merriman (*Director/Artistic Director*) has been an active member of the local theatre community since moving to Des Moines in 2013. Her Playhouse directing credits include the recent co-production with

Pyramid Theatre Company, *A Love Offering*, *Some Enchanted Evening*, *Stuart Little*, *I and You*, *The Roommate*, *Love Letters*, and *Elephant & Piggie's*

"We Are in a Play!" Prior to becoming artistic director, Katy appeared on The Playhouse stage in shows including *Into the Woods* (Cinderella), *Les Misérables* (Cosette), *Completeness* (Molly), and *Legally Blonde the Musical* (Elle Woods) and was the musical director for The Playhouse Performance Academy from 2016 to 2018. Katy worked with Iowa Stage Theatre Company as a resident artist where her performance credits include *The Glass Menagerie* (Laura) and *Our Town* (Emily). She also directed their 2018 production of *Fun Home*. Prior to her time in Des Moines, Katy worked with numerous theatres as a performer, director, and administrator. She has a Bachelor of Music from Butler University in Indianapolis, IN. Katy and her husband, Max, have a son, Jack.



Brenton Brown (*Music Director*) says *Godspell* is his 55th show for The Playhouse! His Playhouse shows include *Singin' in the Rain*; *A Christmas Story: The Musical*; *Fiddler on the Roof*; *Les Misérables*; *Mary Poppins*;

Monty Python's Spamalot; *Into the Woods*; *West Side Story*; *The New Mel Brooks Musical Young Frankenstein*; *A Chorus Line*; *Disney's The Little Mermaid*; *Mamma Mia!*; *Billy Elliot The Musical*; *Elf – The Musical*; *Catch Me If You Can*; *Disney's Newsies*; and *A Gentleman's Guide to Love and Murder*. He was awarded the Cloris Leachman Excellence in Theatre Award for best musical direction of The Playhouse production of *Ragtime*. He has appeared onstage as the title character in *Sweeney Todd* at the Ingersoll Dinner Theatre and as L.M. in *Pump Boys and Dinettes* at The Playhouse. Brenton is the corporate supplies/equipment coordinator for Hy-Vee and artistic director of the Harmony Delegation Chorus. He and his wife, Jessica, enjoy spending time with their children, Lindy and Bennett.



Megan Helmers (*Choreographer*) directed and choreographed *Disney's Freaky Friday One Act* and *A Chorus Line* at The Playhouse, *The Bridges of Madison County* and *Ordinary Days* at

Tallgrass Theatre Company, *Bring It On* at Des Moines Young Artists' Theatre (Cloris Award: Best Choreography), *tick, tick... BOOM!* at Noce,

GODSPELL CAST NOTES

and many others. Her recent choreography includes *Disney's Newsies* (Cloris Award: Best Choreography), *Elf – The Musical*, *Billy Elliot The Musical*, *Disney's The Little Mermaid* (Playhouse); *Hello, Dolly!* (Theatre Cedar Rapids); *Oklahoma!*, *Chaplin* (Revival Theatre Company, Cedar Rapids); *Adore Us! Line, Fun Home, Company* (Iowa Stage Theatre Company); and many more. Megan is the director of marketing and PR at the Des Moines Symphony and enjoys dancing around the house with husband Charlie Reese and their pets, Detective Olivia Benson Helmers-Reese, Elliott Patrick Swayze Helmers-Reese, and Jane.



Alex Snodgrass (*Set Designer*) has worked as a freelance designer and instructor locally and up and down the East Coast. He is a graduate of the Conservatory of Theatre Arts at Webster University

(Missouri). Alex is the technical director/designer at Grand View University. He has worked with The Playhouse as stage manager and designer, Repertory Theater of St. Louis (lighting designer, prop artisan); Opera Theatre of St. Louis (prop artisan); Des Moines Social Club (scenic and lighting designer); Des Moines Young Artists' Theatre (scenic and lighting designer); Northern Stage (props management) and Saint Michael's Playhouse (scenic design), both in Vermont; and more. He has served as a technical theatre teacher and coach at Des Moines Roosevelt High School and Waukee High School. Alex is the recipient of the 2016 Cloris Award for Best Lighting Design for his work on DMYAT's *The Hobbit*. His favorite Playhouse memory is throwing large things out the trap door in *Seussical The Musical* on the mainstage.



Angela Lampe (*Costume Designer/Associate Artistic Director*) began her tenure with The Playhouse in 1993 and has designed costumes, sets, and props for nearly 300 productions including *Guys and Dolls*,

Meredith Willson's The Music Man, *A Gentleman's Guide to Love and Murder*, *Ella Enchanted*, *The Miraculous Journey of Edward Tulane*, *Ragtime*, *Les Misérables*, *Disney's The Little Mermaid*, *West Side Story*, *Into the Woods*, *A Streetcar Named*

Desire, *Sunset Boulevard*, and *Hairspray*. She has a B.A. from Central College in Pella and a M.F.A. in theatre from the University of Nebraska. She is the recipient of four Cloris Awards for excellence in costuming and puppetry.



David R. Kilpatrick (*Lighting Designer*) joined The Playhouse as executive director in May 2017. In addition to management, David's artistic credits include stage management, directing, and lighting design. As a lighting

designer he lit our summer 2020 Season of *Love Letters*, *Rounding Third*, and *The Roommate*. Prior shows include *A Gentleman's Guide to Love and Murder*, *Mamma Mia!*, *Hair*, *Mary Poppins*, and *Disney's The Little Mermaid*. His education includes degrees from George Mason University, Missouri State, and University of Missouri, where his dissertation was the exploration of the audience as it prepares for the show.



Tim Harris (*Sound Designer/Associate Technical Director*) is originally from Lacrosse, WI, but now very glad to call Des Moines home. A few favorite past productions have been *Tuesdays with Morrie*, *Noises Off*, *Xanadu*, and *Mamma Mia!* He draws his support from his mother, family, and friends, and is still looking for that special lady in his life.



Allyson Braun (*Properties Designer*) was most recently seen as Ella in The Playhouse's production of *Ella Enchanted*. Other Playhouse shows include *Elephant & Piggie's "We Are in a Play!"* (Piggie) and *Mamma Mia!*

She played Ado Annie in the Quad City Music Guild's production of *Oklahoma!* This is her first time as a properties designer at The Playhouse but she spent four years doing props in college and is excited to be returning to it. Allyson lives in Beaverdale with her husband, Ian, and their two cats.

GODSPELL CAST NOTES



Sara Kottra (*Assistant Music Director*) recently graduated from Iowa State University with a degree in vocal music education. Her experience at The Playhouse includes being a Newsie in *Disney's Newsies* and serving as assistant music director for *A Christmas Story: The Musical*. Sara enjoys baking, spoiling her kitten, and trying new foods.



Grace Ammann (*Assistant Choreographer*) has been dancing since she was four years old. She first danced at The Playhouse in *A Chorus Line*. Her credits include *42nd Street* (Lorraine) and assistant choreographer and Grandma in *The Addams Family* all at Des Moines Roosevelt High School. Her favorite theatrical experience to date was at Roosevelt, where she got to choreograph "Be Prepared" for *Disney's The Lion King Jr.*, the first time she saw her original choreography come to life on stage. Grace is attending Oklahoma City University, earning her B.S. in dance management with a minor in directing.



Jada Smith (*Stage Manager*) has grown up at The Playhouse, making her debut in 2005 as Gladys Herdman in *The Best Christmas Pageant Ever*. Her other Playhouse shows include *Annie*, *Hairspray* (Little Inez), *Fiddler on the Roof* (Chava), *Ragtime*, and the theatre's 100th anniversary gala show. Jada has also performed in The Playhouse Performance Academy production of *Fame Jr.* She has worked on backstage crews, and most recently was assistant stage manager for *I and You*. Jada has her A.A. in liberal arts from Des Moines Area Community College. She works in The Playhouse ticket office and is one of the theatre's house managers.



Ellie Wellman (*Assistant Stage Manager*) was active in theatre at West Des Moines Valley High School, providing stage management for productions of *The Miracle Worker*, *A Midsummer Night's Dream*, *Bright Star*, and,

her favorite, *Tuck Everlasting*. She has taken classes at The Playhouse and also participated in Second Saturday teen theatre improv nights. In her free time, she enjoys playing video games and hanging out with friends.



Stephen Schwartz (*Composer*) wrote the music and lyrics for the current Broadway hit *Wicked* and has also contributed music and/or lyrics to *Godspell*, *Pippin*, *The Magic Show*, *The Baker's Wife*, *Working* (which he also adapted and directed), *Rags*, and *Children of Eden*. He collaborated with Leonard Bernstein on the English texts for Bernstein's *Mass* and wrote the title song for the play and movie *Butterflies are Free*. For children, he has written songs for two musicals, *Captain Louie* and *My Son Pinocchio*. He has also worked in film, collaborating with Alan Menken on the songs for Disney's *Enchanted* as well as the animated features *Pocahontas* and *The Hunchback of Notre Dame* and writing the songs for the DreamWorks animated feature *The Prince of Egypt*. His first opera, *Séance on a Wet Afternoon*, was produced at Opera Santa Barbara and New York City Opera. A book about his career, *Defying Gravity*, has been released by Applause Books. Mr. Schwartz has been inducted into the Theatre Hall of Fame and the Songwriters Hall of Fame and has been given a star on the Hollywood Walk of Fame. Awards include three Academy Awards, four Grammy Awards, and a tiny handful of tennis trophies.



John-Michael Tebelak (*Book*) originally wrote *Godspell* as his masters' thesis project at Carnegie-Mellon in 1971. Subsequently, he directed productions of *Godspell* at La MaMa Theatre, the Cherry Lane Theatre, the Promenade Theatre, and on Broadway. He received the 1971 Drama Desk award for Most Promising Director. In 1972, Mr. Tebelak directed the play *Elizabeth I* on Broadway and off-Broadway staged *The Glorious One* in 1975 and *Ka-Boom* in 1980. He is also co-writer with David Greene of the 1973 film of *Godspell*. He was dramaturg for the Cathedral Church of St. John the Divine in New York and staged liturgical drama there and the church's theatre bears his name.

645th Production
102nd Season

Opening July 16, 2021
Closing August 1, 2021

Des Moines Community Playhouse Presents a Tent Theatre Series

PLAZA SUITE

By Neil Simon

Presented by **MidAmerican Energy Company**

Sponsored by **Lincoln Savings Bank, Phyllis Mumford-Sovern & Kent Sovern,
Jan & Layton Stump, Edward & Nancy Truslow**

Director: **Sarah Grant**
Intimacy Director: **Stephanie Schneider**
Set Designer: **Alex Snodgrass**
Costume Designer: **Angela Lampe**
Lighting Designer: **David R. Kilpatrick**
Sound Designer: **Tim Harris**
Properties Designer: **Allyson Braun**
Assistant Director: **Toni K. Farris**
Stage Manager: **Lauren Dursky**
Assistant Stage Manager: **Brandon Record**
Artistic Director: **Katy Merriman**

Cast

In Order of Appearance

★Indicates Playhouse Debut

VISITOR FROM MAMARONECK

Bellhop	Jacob Jones*
Karen Nash.....	Jennifer Hughes
Sam Nash	Jim Benda
Waiter	Jake Parks
Jean McCormack.....	Samantha Miller*

VISITOR FROM HOLLYWOOD

Waiter	Jake Parks
Jesse Kiplinger.....	Bobby Nalean
Muriel Tate	Emily Davis

VISITOR FROM FOREST HILLS

Norma Hubley	Donna Scarfe
Roy Hubley	Lorenzo Sandoval
Bordon Eisler.....	Jake Parks
Mimsey Hubley.....	Samantha Miller*

Place: The same suite at the Plaza hotel

Time: Late 1960s

Plaza Suite is presented with a 15-minute intermission between Acts I and II
and a 10-minute intermission between Acts II and III.

Plaza Suite is presented by special arrangement with Concord Theatricals on behalf of Samuel French, Inc.
www.concordtheatricals.com

PLAZA SUITE CAST NOTES



Jim Benda (*Sam Nash*) is making his 20th appearance on The Playhouse stage since debuting as Ziegfeld in *Funny Girl* in 1992. His other Playhouse credits include *You Can't Take It with You*, *The Drowsy Chaperone*, and

Hello, Dolly! Jim most recently played Bob Cratchit in over 100 performances of *A Christmas Carol* in Pensacola, FL, where he and his partner, Lou, spend their winters.



Emily Davis (*Muriel Tate*) counts among her Playhouse roles Alice in *You Can't Take It with You* and Kristine in *A Chorus Line*. Other area shows include *A Doll's House* at Iowa Stage Theatre,

Oleanna at Tallgrass Theatre Company, and *Closer* at Open Door Rep. For Kata Klysmic, she has directed *The Rocky Horror Show*, *The Vagina Monologues*, and *Hedwig and the Angry Inch*. Emily is a resident counselor at House of Mercy and shares her life with her husband, Ryan.



Jennifer Hughes (*Karen Nash*) is a resident artist with Iowa Stage Theatre Company who in recent years has performed the roles of the Mother in *Private Passage*, Hecate in *Macbeth*, Lana Sherwood in *It's*

a Wonderful Life: The Radio Play, and Elizabeth in *The Christians*. She is self-employed as a medical language specialist and helps manage her family's cattle farm in Lacona, IA. Jennifer enjoys homeschooling her two daughters and singing and playing music with her partner, Joel Kinser.



Jacob Jones (*Bellhop*) is a senior at Iowa State University studying performing arts and political science. His favorite role to date is Pink in *Facing Our Truth* which he did at ISU Theatre under director Tiffany Johnson. Other

ISU shows include *On the Horizon*, *Our Community Carol*, and *Of the Deep*. He was also Joey Biltmore in *Guys and Dolls* at Des Moines Area Community College in Ankeny. He is excited to be making his Playhouse debut.



Samantha Miller (*Jean McCormack/Mimsey Hubley*) is a junior at Lincoln High School. She has taken classes at The Playhouse since second grade and appeared in Performance Academy productions of Disney's

The Lion King Kids (Nala) and *The Music Man Jr.* (Amaryllis). Sam enjoys dancing, singing, and photography.



Bobby Nalean (*Jesse Kiplinger*) is familiar to Playhouse audiences from *Love Letters*, *Silent Sky*, *Les Misérables*, and *Fiddler on the Roof*. Other favorite productions include *Into the Woods* (Narrator/Mysterious Man) at Simpson

College; and *You're a Good Man, Charlie Brown* (Snoopy); *Oliver!* (Fagin), and *Meredith Willson's The Music Man* (Tommy Djilas), all at Ogden (IA) Community Theatre. Bobby loves to travel the world with his wife, Anna; spoiling their two Boston terriers; and cheering on the Iowa Hawkeyes.



Jake Parks (*Waiter/Borden Eisler*) grew up in Forest City and made his Playhouse debut this past spring as Will in *Some Enchanted Evening: The Songs of Rodgers & Hammerstein*. Favorite shows include *Rent* at the University of

Northern Iowa and *Fiddler on the Roof* at Forest City High School. Jake is a product engineer at Emerson Automation Solutions. He enjoys snowboarding, making music, playing Dungeons and Dragons, and creating YouTube videos. Jake is married to Kyra Sorenson.



Lorenzo Sandoval (*Roy Hubley*) is the founding artistic director of the Iowa Shakespeare Experience. He is an adjunct instructor at DMACC, Grand View University, and Upper Iowa University. He teaches speech

and composition. He received his M.F.A. from the University of Iowa's playwrights' workshop and was honored to be a Dimmitt Fellow at Morningside College (Sioux City). Lorenzo made his Playhouse debut as Juror #7 in *12 Angry Men*

PLAZA SUITE CAST NOTES

and more recently played Actor 2 in *Ken Ludwig's Baskerville: A Sherlock Holmes Mystery*.



Donna Scarfe (*Norma Hubley*) studied ballet on a Fulbright Fellowship in Romania and has a M.A. in theatre and deaf studies. She acted with the National Theatre of the Deaf and The Playhouse and is a founding

member of the Iowa Stage Theatre Company and ASL interpreter. She owns Fyne Hats By Felicity (www.fynehatsbyfelicity.com) which creates period and contemporary hats. Donna is married to Alan, and they have a son and daughter in the U.S. and a son and a daughter in the U.K.



Sarah Grant (*Director*) is a Chicago-based actor, director, and theater educator. She has worked as a director at the Chicago Children's Theatre, Three Cat Productions, and the Chicago Academy for the Arts, where she

teaches script analysis and intermediate acting. As an actor, she's performed at theaters across Chicago including Goodman Theater, House Theatre, Theo Ubique, Provision Theater, Red Tape Theatre, and Windy City Playhouse where she played the lead role in the two-year run of their smash hit, *Southern Gothic*. She is represented by Lily's Talent and holds a master's degree in the humanities from the University of Chicago.



Stephanie Schneider (*Intimacy Director*) is an intimacy director and performer based in Des Moines. Her intimacy direction credits include *Singin' in the Rain* and *I and You* at The Playhouse, *The Bridges of Madison County* at

Tallgrass Theatre Company, and *Atlas of Mud* at Theatre Midwest as well as intimacy coordinator for two local Iowa films. Stephanie is passionate about bringing intimacy direction to the theatre and film community in Des Moines and hopes that it spreads across Iowa. She welcomes questions about the work and asks those interested to reach out on social media @cheshire1031. Recent acting credits include *Singin' in the Rain* (Kathy) and *A Christmas Story: The Musical* (Miss Shields) at The Playhouse. Represented by Peak Agency,

she works in film, improv, and voice-over as well. When not performing, you can find her reading, nerding out on Star Wars, spending time outdoors, and playing Dungeons and Dragons.

Alex Snodgrass (*Set Designer*) Read Alex's bio in *Godspell* Cast Notes.

Angela Lampe (*Costume Designer/Associate Artistic Director*) Read Angela's bio in *Godspell* Cast Notes.

David R. Kilpatrick (*Lighting Designer*) Read David's bio in *Godspell* Cast Notes.

Tim Harris (*Sound Designer*) Read Tim's bio in *Godspell* Cast Notes.

Allyson Braun (*Properties Designer*) Read Allyson's bio in *Godspell* Cast Notes.



Toni K. Farris (*Assistant Director*) began her Playhouse career more than 30 years ago, volunteering on the shift and properties crew for *A... My Name is Alice*. Since then, she has stage managed various

shows at area theatres and served as light board operator. At The Playhouse, she most recently was assistant director for *A Gentleman's Guide to Love and Murder*. Toni is an intellectual property legal assistant at Corteva Agriscience. She likes traveling, reading, and cheering on the Liverpool Football Club.



Lauren Dursky (*Stage Manager*) has a B.A. in theatre from Iowa State University and serves as director of production/production stage manager at Iowa Stage Theatre Company. At The Playhouse, she was stage manager for *A Chorus Line*. In Lauren's free time, she enjoys watching Netflix with her dog, Mia, crocheting, and sleeping.

PLAZA SUITE CAST NOTES



Brandon Record (*Assistant Stage Manager*), originally from Gillette, WY, has a Bachelor of Music degree from the University of Sioux Falls and is working on his master's degree at Drake University. His numerous theatre

credits include performing, stage management, lighting design, and musical direction. His favorite onstage role was The Baker in *Into the Woods* at the University of Sioux Falls and his favorite production team role to date has been music director for *Hairspray* at the Summer Performing Arts Academy in Sioux Falls, SD. Brandon is director of choirs and general music teacher at Des Moines Hiatt Middle School.

Katy Merriman (*Artistic Director*) Read Katy's bio in *Godspell* Cast Notes.



Neil Simon (*Playwright*) is widely regarded as one of the most successful, prolific, and performed playwrights in theatre history. In addition to *Lost In Yonkers*, which won a Tony Award and Pulitzer Prize, his

plays and musicals include *Come Blow Your Horn*; *Little Me*; *Barefoot in the Park*; *The Odd Couple*; *Sweet Charity*; *The Star-Spangled Girl*; *Plaza Suite*; *Promises, Promises*; *Last of the Red Hot Lovers*; *The Sunshine Boys*; *California Suite*; *Chapter Two*; *They're Playing Our Song*; *I Ought to be in Pictures*; *Brighton Beach Memoirs*; *Biloxi Blues*; *The Odd Couple* (female version); *Broadway Bound*; *Rumors*; *Jake's Women*; *The Goodbye Girl*; *Laughter on the 23rd Floor*; *45 Seconds from Broadway*; *Oscar and Felix*; and *Rose's Dilemma*. In addition to the film adaptations he wrote of many of his plays, his screenplay credits include *The Out-Of-Towners*, *The Heartbreak Kid* (original 1973 version), *Murder by Death*, *Seems Like Old Times*, *Max Dugan Returns*, *The Slugger's Wife*, and *The Odd Couple II*. For television, Mr. Simon wrote series, teleplays, and motion pictures, including *The Tallulah Bankhead Show*, *The Sid Caesar Show*, *The Phil Silvers Show*, *The Garry Moore Show*, ABC's *Broadway Bound* and *Jake's Women*. Books by Mr. Simon include *Rewrites*, *A Memoir*; *The Play Goes On*; and four omnibus collections of his plays. Mr. Simon received more Academy and Tony nominations than any other

writer. Awards he received include Emmy Awards for *The Sid Caesar Show* and *The Phil Silvers Show*, Tony Awards for *The Odd Couple*, *Biloxi Blues*, and *Lost In Yonkers*, and a special Tony Award For Overall Contribution to the Theatre. Other awards include a Writers Guild Laurel Award, an American Comedy Award for Lifetime Achievement, and a Writers Guild Screen Award Nomination for *Barefoot in the Park* as well as an Oscar Nomination for *The Odd Couple*, an Evening Standard Award, a Sam S. Shubert Foundation Award, Kennedy Center Honors, a UCLA Medal, a Peggy V. Helmerich Distinguished Author Award, and a William Inge Theater Festival Award for Distinguished Achievement in the American Theater.

Proud supporter of the
Arts and publisher of

Standing
OVATION

heuss
printing INC

www.heuss.com

113th Production
26th Season

Opening July 10, 2021
Closing Aug. 7, 2021

Des Moines Community Playhouse Presents a Tent Theatre Series

POLKADOTS: THE COOL KIDS MUSICAL

Book by Melvin Tunstall III

Music by Greg Borowsky and Douglas Lyons

Lyrics by Douglas Lyons

Based on an original concept by Douglas Lyons

The World Premiere Recording of *Polkadots: The Cool Kids Musical* is available on Sony Records and through Amazon or iTunes

Presented by **MidAmerican Energy Company**

Sponsored by **Lincoln Savings Bank, Phyllis Mumford-Sovern & Kent Sovern,
Jan & Layton Stump, Edward & Nancy Truslow**

Director: **Peter Dean**

Musical Director: **Tina Haase Findlay**

Choreographer: **Antonesia Williams**

Set Designer: **Alex Snodgrass**

Costume Designer/Properties Designer: **Angela Lampe**

Lighting Designer: **David R. Kilpatrick**

Stage Manager: **Greg Millar**

Assistant Stage Manager: **Aaliyah Trimble**

Artistic Director: **Katy Merriman**

Cast

In Order of Appearance

★Indicates Playhouse Debut

Penelope Square	Kaelan Bohn*
Sky Square.....	Marquis Bundy
Ms. Square/Mama Square.....	Lexus Thiessen
Lily Polkadot.....	Ashlyn Yu

Polkadots is presented without intermission.

Polkadots is presented by special arrangement with Broadway Licensing, www.broadwaylicensing.com

MUSICAL NUMBERS

<i>First Day</i>	Penelope, Sky, Lily, Ms. Square
<i>Sticks and Stone</i>	Lily
<i>One Pal</i>	Lily
<i>Square Motto</i>	Mama Square, Penelope, Sky
<i>Beautiful</i>	Sky
<i>The First</i>	Ms. Square, Lily
<i>One Pal (Reprise)</i>	Lily
<i>Cool Kid</i>	Penelope
<i>The Squa-Dot</i>	Lily, Sky, Ms. Square, Penelope
<i>New Day</i>	Penelope, Sky, Lily, Ms. Square
<i>Bows/Finale</i>	Penelope, Sky, Lily, Ms. Square

POLKADOTS CAST NOTES



Kaelan Bohn (*Penelope Square*) is a recent graduate of Bondurant-Farrar High School who will be attending Drake University this fall for pre-nursing. She was active in Bondurant-Farrar theatre with roles in *Guys and Dolls*, *The Good Doctor*, and *Seussical The Musical*. She was also involved in individual and large group speech, receiving All-State honors her senior year for her rendition of "Right-Hand Man" from *Something Rotten*. *Polkadots* is Kaelan's Playhouse debut.



Marquis Bundy (*Sky Square*) recently graduated from Des Moines Lincoln High School and will be attending Columbia College, Chicago pursuing his B.F.A. in musical theatre. His Playhouse shows include the Performance Academy production of *The Music Man Jr.* (Harold Hill) and, on the mainstage, *The Diary of Anne Frank* (Peter van Daan) and *Disney's Freaky Friday One Act*. At Lincoln, Marquis choreographed *Honk! The Musical*, *Forever Plaid*, and *Hairspray*. Marquis is interested in graphic design.



Lexus Thiessen (*Ms. Square/Mama Square*) is a K-5 music teacher for the Carlisle School District. She is familiar to Playhouse audiences from *Disney's The Little Mermaid*, *Ragtime*, *Disney's Newsies*, *A Christmas Story: The Musical*, *Stuart Little*, and *The New Mel Brooks Musical Young Frankenstein*. Lexie also performed *Puffs*, a virtual reader's

theater, for Ankeny Community Theater. In her free time, Lexi sings in her church choir and performs in a band with her husband, Nathan.



Ashlyn Yu (*Lily Polkadot*) is a sophomore at Waukee Northwest High School. Her favorite role has been Veruca Salt in *Willy Wonka Jr.* at Waukee Middle School. Her Playhouse debut was in the 2019 production of *A Christmas*

Story: The Musical, playing Esther Jane. Outside of theatre, Ashlyn is heavily involved in music and speech team. Recently, she achieved All-State for solo musical theatre and individual speech. Ashlyn enjoys volunteering and hanging out with friends and family.



Peter Dean (*Director*) counts among his numerous Playhouse shows *Choices* (Frank Gates), *The Addams Family* (Lurch), *Girls' Weekend* (Sheriff Tom), *Tales of a Fourth Grade Nothing* (Mr. Hatcher), *The Wizard of*

Oz (Cowardly Lion), *The Drowsy Chaperone* (Gangster), and *How I Became a Pirate* (Sharktooth, for which he won a Dionysos Award). He has been an assistant director at The Playhouse for the 2018 production of *The Best Christmas Pageant Ever* and the 2019 production of *A Christmas Story: The Musical*, and directed *Leaving Iowa* this winter. He is a member of the Friday Funday cast, member of Playhouse Partners, and was a recipient of a 2017 Dionysos Award for Volunteer of the Year. Peter co-directed the Iowa premiere of *The Wolves* at Des Moines Roosevelt High School where he is also a speech coach for IHSSA. He is an adjudicator for both the

POLKADOTS CAST NOTES

IHSSA and IHSMTA supporting the arts in Iowa High Schools. Peter and his wife, Melody, have three daughters, Riley, Caitlyn, and Kenzie.



Tina Haase Findlay (*Music Director*) has more than 50 years as a performer. She is the youngest person – and one of the only women – in the Des Moines Jazz Hall of Fame, a two-time Iowa Blues Challenge champion, and two-time winner of Prairie Meadows Vocal Hero. She has headlined nearly every major music festival in Des Moines over the past 20 years and performs regularly at Noce. A composer and arranger, Tina has been a vocal coach for the past 20 years and has 13 years music ministry leadership experience. Her voice can be heard in many commercial jingles such as “Iowa, You Make Me Smile,” Northern Lights Pizza, and Des Moines Mitsubishi. At The Playhouse, Tina has appeared in *Joseph and the Amazing Technicolor Dreamcoat* (Narrator), *Ain’t Misbehavin’*, and the theatre’s Celebration of the Century.



Antonesia Williams (*Choreographer*) is a junior B.F.A. musical theatre student at Drake University. This past winter, she worked with Two Steps to the Left productions at The Playhouse on the devised film, *nature of the dream*. Her stage credits include *Pippin* (Player) and *Spunk* (Blues Speak Woman) at Drake, *Rent* (Joanne) at East High School, and *Bring It On* (Danielle) at Des Moines Young Artists’ Theatre. In her free time, she likes to sing and write songs, as well as paint and watch movies/TV. She is excited to be making her choreographic debut at The Playhouse.

Alex Snodgrass (*Scenic Designer*) Read Alex’s bio in *Godspell* Cast Notes.

Angela Lampe (*Costume Designer/Associate Artistic Director*) Read Angela’s bio in *Godspell* Cast Notes.

David R. Kilpatrick (*Lighting Designer*) Read David’s bio in *Godspell* Cast Notes.

Tim Harris (*Sound Designer*) Read Tim’s bio in *Godspell* Cast Notes.

Allyson Braun (*Properties Designer*) Read Allyson’s bio in *Godspell* Cast Notes.



Greg Millar (*Stage Manager*) started at The Playhouse with his first role(s) of judge, waiter and ensemble in *Hello, Dolly!* Since then, he has had lead roles in *Footloose*, *Annie*, *Disney’s Beauty and the Beast*, *Fiddler on the Roof*, *Chitty Chitty Bang Bang*, *Leaving Iowa*, and many more including his favorite roles, Harold in *The Full Monty*, and Santa in *Elf – The Musical*. Greg has stage managed over a dozen shows and taught several summer and break classes. He is a Friday Funday cast member. He and his wife, Carol, have three children, Ben, Shelby, and Taylor.



Aaliyah Trimble (*Assistant Stage Manager*) is a sophomore at West Des Moines Valley High School. Her first Playhouse experiences were classes, including *Silent Stories: The Wizard of Oz* (Dorothy), *Big Nate* (Gina), *Dork Diaries* (Mackenzie), *Dear Edwina* (Edwina), *A Series of Unfortunate Events* (Captain Sham), *Annie Jr.* (Drake), *Alice in Wonderland* (Queen of Hearts), *The Big One-Oh!* (Dona), *Willy Wonka Kids*, and *Seussical Jr.* Her school shows include *Guys and Dolls Jr.* and *Spamalot Jr.* She participated in a Civic Center Camp, playing Jayden in *The Grunch: A Children’s Musical*. Aaliyah participates in Valley’s Varsity Show Choir, Curricular Choir, Select Treble Clef Choir, and JV Jazz Choir.

Katy Merriman (*Artistic Director*) Read Katy’s bio in *Godspell* Cast Notes.



Greg Borowsky (*Music*) is a songwriter and producer from South Africa, signed to Sony ATV. He is the creative producer and writer behind some of South Africa’s biggest SAMA (SA Grammy) winning artists. His debut album, signed to Universal Music SA, was nominated for a Metro FM Best RnB Award and his single *Chocolate Vanilla* was nominated

POLKADOTS CAST NOTES

for a Best RnB Channel O Africa Award. After co-writing and producing the official "20 Years of Freedom" song for the South African Government, Mr. Borowsky moved to New York to complete his next producer album, *The Greg Dean Project* featuring soul and Broadway artists, which reached #1 on the UK Soul Chart and remained on the USA Billboard RnB chart for six weeks in 2016, as well as being nominated for a SoulTracks Album of the year Award. His show *Polkadots: The Cool Kids Musical* won the Off-Broadway Alliance Award for Best Family Show in 2018.



Douglas Lyons (*Music/Lyrics/Original Concept*) is a composer-lyricist and actor who has originated roles on Broadway in *The Book of Mormon* and *Beautiful: The Carole King Musical*. As a writer, Mr.

Lyons was awarded the Bully Free Communities Spotlight Award and the Best Family Show Off-Broadway Alliance Award for *Polkadots*, which was presented Off-Broadway at The Atlantic Theater Company. World premieres include *Five Points* at Theater Latte Da and *Peter, Darling...* at Casa Mañana Theatre. With composer Ethan Pakchar his lyrics have played Prospect Theater Co. (*The Funeral*), Lincoln Center, The Old Globe, Seattle Rep, and more. Residencies include The Directors Company and The Sheen Center. Commissions include Seattle's 5th Ave Theatre.



Melvin Tunstall III (*Book*) began his writing career while still a student at the Cincinnati Conservatory of Music as a founding member of the AMP Theatre Company. A proud participant in the Yale

Institute for Musical Theater, Mr. Tunstall took a small break from writing to make his Broadway debut in *Beautiful: The Carole King Musical* after originating the role of Ja'Keith in the Toronto Company of the Broadway smash *Rock of Ages*. The acting bug now quenched, Mr. Tunstall returned to writing with commissioned adaptations of the Broadway musicals *Wonderland* and *The Wiz*. His original musical *BLooM!* was a finalist in the renowned NAMT Festival in New York City. *Peter, darling...*, his highly anticipated new musical version of the classic *Peter Pan*, was commissioned by and premiered at Casa Mañana Theatre in Texas. His show *Polkadots: The Cool Kids Musical* won the Off-Broadway Alliance Award for Best Family Show in 2018. Mr. Tunstall currently resides in New York City where he is hard at work writing the book, melodies, and lyrics to *Senior Class: a new musical Pygmalion*.

Thank you for coming to the show!

Because of you, we have kept live theatre alive.

Your support of The Playhouse means everything to us. Consider a gift to keep us going strong for years to come:

\$470 Sends three classrooms of kids to an in-person school matinee this year

\$280 Dry-cleans costumes for the entire run of a show

\$75 Provides snacks and gas cards for our volunteers, reducing barriers to participation

\$39 Helps us buy props and supplies to keep things running backstage



Jewels Academy is an organization that offers award-winning STEM and self-enrichment programs for underrepresented young women in 4th - 12th grades.



The Young Emerging Scientists program received a seal of approval from the governor's STEM advisory council



Phone: (515) 243-9159
Email: info@jewelsacademy.org
www.jewelsacademy.org

@jewelsacademy
 @jewelsacademy1
 @jewelsacademy1
 @jewels-academy

CAST LIST

Opening July 27, 2021

Closing July 27, 2021

Des Moines Community Playhouse Presents a Tent Theatre Series

FAE RIDES AGAIN

The Final Act Ensemble is a group of actors that rehearses weekly to bring live radio performances to audiences young and old across Central Iowa. Their repertoire includes classic radio scripts and original pieces.

Director: **Jerry Eisenhour**

Music Director: **Susie McCauley**

Vocal Coach: **Phyllis Wolfe**

Ensemble

Jim Arthur
Ralph E. Bowman
Katie Brooks
Al Downey
Ruth Downey
Jerry Eisenhour
Barbara Keck
Molly Ketchum
Elysa Koss
Melinda Leseney

R.J. Lundgren
Susie McCauley
Cynthia Mercati
Mark Pullen
Don Rothweiler
Marsha Szymczuk
Ed Truslow
Peter Welch
Phyllis Wolfe

FAE Rides Again is presented with a 15-minute intermission

Shop Online for Curbside Pick Up.



SHOP. PICK UP. GO.

SHOP.FAREWAY.COM

FAE RIDES AGAIN CAST NOTES



Jim Arthur has been kicking around The Playhouse since he took acting lessons in the early '70s. His first Playhouse role was in 1974 as Charlie Thurber in *Jabberwock*. Through the years he has been involved at The Playhouse from time to time on stage and off. His wife, Jeanella, has been active sewing costumes, and his daughter, Anne, and her daughters have been involved in numerous plays. He has been with the Final Act Ensemble since 2010 and enjoys the camaraderie of the group and the challenge of "emoting" at the microphone.



Ralph E. Bowman taught high school for 36 years. He has directed 138 shows in high schools and community theatres and acted in shows. Ralph says his favorite stage role was Joe Benjamin in *God's Favorite* at Independence (MO) Community Theatre. He has written 37 books, mostly westerns. Ralph and his wife of over 50 years, Sandra, have one son and two grandchildren.



Katie Brooks joined Final Act Ensemble in 2010 after seeing them perform at her granddaughter's school. She has spent most of her time ever since having fun slamming doors, ringing bells, and dragging chains at the sound effects table. Katie worked with her husband, Steve, for almost 40 years and, believe it or not, they're still having fun!



Al Downey was named a Playhouse Legend in 2011. He made his Playhouse debut in 1960 in *The Madwoman of Chailot*. Since then, he has appeared on stage in more than 25 shows. His last Playhouse stage role was as Crooks in *Of Mice and Men*, and his favorite role was Lucien P. Smith in *The Boys Next Door*. He also performed with the Drama Workshop and Charlie's Showplace. Al has served on virtually every backstage crew and stage managed several shows. His interests include drawing, reading, and playing the piano.



Ruth Downey was a classroom teacher for Clarke Community Schools during which time she helped create a traveling theatre group, The Piccadilly Players. She retired after working 30 years in the accounting field. Ruth's Playhouse credits include the Principal in *There's a Boy in the Girl's Bathroom*. She has also worked backstage on props crew, shift crew, and as a dresser, and in guest services as an usher and ticket taker. She enjoys music, serving as a church organist for more than 50 years, and traveling and spending quality time with her husband, Al.



Jerry Eisenhour (Director) is a 2013 Volunteer of the Year for his many hours spent helping paint sets at The Playhouse and his time directing the Final Act Ensemble. Before retiring, he taught theatre for 30 years. Jerry, along with his wife, Susan, recently lent their Foley artist skills to the holiday show, *Playhouse on the Air Presents: Miracle on 34th Street*.



Barbara Keck has been a part of Final Act Ensemble for the last 10 years. Her favorite role has been Mrs. Uppington in *Fibber McGee and Molly* radio shows. Barb received her B.A. in elementary education from Cornell College. When she's not rehearsing for the next Final Act Ensemble production, she enjoys basket weaving, singing, and playing with her great-grandchildren.



Molly Ketchum has been an active member of the theatre community for many years. Her favorite role to date, Ethel Thayer in *On Golden Pond*, was at the Boone Community Playhouse. She has also worked on several films including *The Crazies*, *Molly's Girl*, and *Peace Patch*. A retired elections administrator, she participates in women's suffrage reenactments. Molly's significant other, R.J. Lundgren, is also a member of the Final Act Ensemble and is her partner in steampunk and Renaissance faire activities.

FAE RIDES AGAIN CAST NOTES



Elysa Koss has appeared in *Fiddler on the Roof* (Shaindel), *A Little House Christmas* (Mrs. Oleson), *Meredith Willson's The Music Man* (Alma Hix), and *Leaving Iowa* (Multiple Character Gal) at The Playhouse. Other area

credits include period melodramas and medicine shows at Living History Farms, shows with the Final Act Ensemble, and local commercials. Elysa plays handbells and guitar and likes to bike.



Melinda Leseney made her Playhouse debut more than 20 years ago playing the narrator in *To Kill a Mockingbird*. She appeared in *Meredith Willson's The Music Man* twice and *The Sound of Music*, was on the shift

crew for *Camelot*, and stage managed many Playhouse musicals over the years. Her favorite role to date was playing the Scarecrow in Final Act Ensemble's production of *The Wizard of Oz*. Melinda is a retired chemist for the University of Iowa's Hygienic Lab. In her free time Melinda enjoys reading, acting, and writing.



R. J. Lundgren has an extensive background in theatre, acting and directing with the Olde Creamery Theater Company (Amana), Prairie Fire Children's Theatre (Barrett, MN), Repertory Theatre of Iowa, Tallgrass

Theatre Company, Black Hawk Children's Theatre (Waterloo), Oster-Regent Theater (Cedar Falls), and many more. With his "housekeeper," Molly Ketchum, R.J. participates in many Renaissance faires performing as the first Irish Pope, His Hooleyness Malarkey I, or as the steampunk Pope, His Radiance Brother Barnabas Brass-Boilerplate. A leather artist (RJLeather), he also designed the Black Hawk County Iowa Vietnam Veteran's Monument.



Susie McCauley (*Music Director*) made her debut performance in 2007 as a foley artist (sound effects) with *Mystery Loves Company*. Her favorite role to date is Jane Ace in *Jane Visits the Psychiatrist*. Other experience

at The Playhouse includes stand-up comedy, radio

performance, and song/dance classes. She likes reading, walking, music, and writing new radio plays to be performed by Final Act Ensemble.

Cynthia Mercati is a freelance writer who has had plays produced in every state of the union as well as Cape Town, South Africa; Korea; Ukraine; Australia; Holland; and Canada. She has written plays for Actors on Tour, The Playhouse's touring theatre company, as well as published children's books and novels. She taught playwriting and creative drama in the theatre's education department. She has numerous area onstage credits including *George Washington Slept Here* (a cast that also included Al Downey) and Constanza in *Amadeus*, both at The Playhouse.



Mark Pullen is a very active member of The Playhouse community and received the 2013 Dick Brown Superior Volunteer of the Year Award for his time spent constructing sets, running lights, ushering, and working backstage

for countless shows. He has also had his share of roles on stage including his favorite, Tevye in *Fiddler on the Roof* at the Cherokee Community Theatre. This spring, he played Mr. Turner in the Pyramid Theatre Company/Playhouse co-production of *A Love Offering*. Mark received his degree in engineering from Iowa State University and is retired as chief pilot for Hy-Vee.



Don Rothweiler has been performing at The Playhouse since 1992, when he played Cinderella's Father in *Into the Woods*. Most recently, he played Sir Peter in *Ella Enchanted*, and says his favorite Playhouse role to

date was The Chairman in *The Mystery of Edwin Drood*. He also performed with Actors on Tour, The Playhouse's educational outreach company. Don is a retired ELCA Lutheran pastor. He enjoys graphic arts, puppetry design, and scenic design and construction. He resides in Ankeny with his wife, Jayme, a musician. Don was named a 2018 Playhouse Volunteer of the Year.

FAE RIDES AGAIN CAST NOTES



Marsha Szymczuk had no background in acting when she attended a Final Act Ensemble performance shortly after retiring as a hospice nurse in 2013. She was immediately drawn to the art and is so grateful to have been accepted into this fun and supportive group. Marsha was taught how to release her inner ham and particularly enjoys the wide variety of roles available, from circus performer in one act to femme fatale in the next. She also enjoys using her voice as a church lector and reading books in character to her grandchildren.



Ed Truslow has been an active member of The Playhouse community since 2010, when he made his debut in Final Act Ensemble's *The Shadow*. He voiced the role of the Wizard in Final Act Ensemble's production of *The Wizard of Oz*. Ed has been in productions at The Playhouse and Urbandale Community Theatre, where he played his favorite role to date, FDR in *Annie*. In his free time, Ed enjoys motorcycles, Studebaker cars, model trains, and driving the real thing as an engineer on the Boone & Scenic Valley Railroad.



Peter Welch is making his Final Act Ensemble debut performance with *FAE Rides Again*. He graduated from Adrian College (Adrian, MI) with a degree in radio broadcasting and liberal arts. He

has performed in *Solidarity* and *Heaven Can Wait* at Stamford (CT) Community Theatre. A voiceover artist, Peter enjoys gardening, reading, cooking, and keeping in shape.

Phyllis Wolfe (*Vocal Coach*) retired from the Des Moines Register in 2000 and started



volunteering for the student creative-problem-solving programs Odyssey of the Mind and Destination Imagination. For the latter, she served as an international challenge master for six years, both writing

challenges and administering tournaments. She found helping to nurture teamworking skills rewarding. A member of Final Act Ensemble since 2007, her favorite role has been the Wicked Witch of the West for the FAE production of *The Wizard of Oz*.

David R. Kilpatrick (*Lighting Designer*) Read David's bio in *Godspell* Cast Notes

Tim Harris (*Sound Designer*) Read Tim's bio in *Godspell* Cast Notes.

THE PLAYHOUSE PRESENTS

With Their Eyes: September 11th

A View from a High School at Ground Zero

Saturday, Sept. 11, 2021 | 8:46 AM & 2:00 PM

This deeply moving play remembers September 11, 2001. Written by high school students at Stuyvesant High School who witnessed the tragedy unfold, *With Their Eyes* remembers those who were lost and those who were forced to witness this tragedy.

AUDITIONS:

Monday, Aug. 2, 2021
6:00 PM

CAST NEEDS:

10-15 high school
aged students

DIRECTOR:

Nathan Jorgensen

ASSISTANT DIRECTORS:

Jenna Darsee
David A. Van Cleave

PRODUCTION CREWS

Technical Director: **Tim Harris**

Set Construction: **Paul Mostrom, Alex Snodgrass, Julianne Ungs**

Charge Artist: **Alex Snodgrass**

Wig Stylist: **Laura Strignoli**

Sound Board Operator: **Audrey Frett**

Master Electrician: **Julianne Ungs**

Playhouse Ambassadors: **Judy Blessington, Mary Bricker, Annette Duffy, Alma Hackbart, Pat Henson, Jolene Huen, Jean Leibold, Sunny Liston, Mary Marshall, Mark Morrison, Becky Scholtec, Mary Whisenand, Sherill Whisenand**

Playhouse Partners: **Dani Boal, Mary Bricker, Edward Corpus, Peter Dean, Denise Forney, Anne Frett, Pam Gabby, Micheal Howland, Jill Lippincott, Rebecca Masucci, Greg Millar, Mark Morrison, Charlie Reese, Maxwell Schaeffer, Jackie Schmillen, Tony Tandeski, Josh Visnapuu, Eva Williams**

Playhouse Photographers: **Steve Gibbons, Brent Isenberger**

Playhouse Historians: **Mark Morrison, Lloyd Von Hagen**

TENT THEATRE SPECIAL THANKS

CLE, Classic Events and Parties, Contemporary Services Corporation, Fareway, Grand View University, Iowa Stage Theatre Company, Image Solutions, Picket Fence Creamery, RAYGUN

SOME ENCHANTED EVENING/THE VELVETEEN RABBIT SPECIAL THANKS

Due to print deadlines, these individuals could not be acknowledged in the previous playbill.

Guest Services: **Eunique Adair, Ealaf Adam, Aviva Adams-Wilk, Siham Ahmed, Ariana Balderas, Corinne Beltrame, Gwyneth Beltrame, Audrey Bissmeyer, Corley Blackford, Miranda Blackford, Emma Breheny, Jennifer Bryant, Darlene Cangas, Dan Chase, Ellie Chungath, Colby Collins, Judi Cooper, Carol Culmer, Lydia Davis, Maddie Davis,**

Patty Davis, Daniel Dunham, Linda Dunham, Jerry Eisenhour, Susan Eisenhour, Karen Elrod, Ava Fagan, Ellen Fisher, Abbie Garlock, Ziva Ghaffer, Zuhayr Ghaffar, Kathy Gilber-Gallagher, Chloe Gilbert, Margo Green, Angela Harvey, Keith Hayes, Lorrie Hayes, Carol Healy, Harold Hinkhouse, Grant Johnson, Laurie Johnson, Anne Jung, Stephanie Kempf, Blythe Ketelsen, Cheryl Kimberley, Jack Kimberley, Marcie King, Trent King, Marcia Klindt, Lily Koch, Susan Lee, Joyce Lehman, Mary Marshall, Linda McClure, Marisa Mickunas, Rayan Musa, Norah Nidey, Eunice Okee, Paige Olson, Carol Palmer, Traci Petersen, Kathy Polson, Darlene Pullen, Mark Pullen, Haley Schlueter, Amy Skarin, Jordan Skarin, Reese Snavelly, Sarah Snavelly, Mark Standley, Mary Staplin, Julia Stuart, Marcus Truong, Neli Vosloh, Camryn Ward, Janet Whiteside, Eva Williams, Aliza Yohana Kat

A LOVE OFFERING SPECIAL THANKS

Due to print deadlines, these individuals could not be acknowledged in the previous playbill.

Guest Services: **Sydney Berger, Miranda Blackford, Jennifer Bryant, Gabrielle Buresh, Darlene Cangas, Ellie Chungath, Colby Collins, Judi Cooper, Carol Culmer, Daniel Dunham, Deborah Dunham, Jerry Eisenhour, Susan Eisenhour, Troy Ellerbroek, Mark Ferguson, Susan Ferguson, Fred Gee, Sharon Gee, Madeline Harris, Keith Hayes, Lorrie Hayes, Harold Hinkhouse, Kristine Hoisington, Grant Johnson, Laurie Johnson, Cheryl Kimberley, Jack Kimberley, Marcia Klindt, Evan Larson, Susan Lee, Savannah Lucas, John Marquart, Linda McClure, Ella McEntaffer, Deb Miles, Traci Petersen, Kathy Polson, Darlene Pullen, Amy Skarin, Mark Standley, Neli Vosloh, Janet Whiteside, Aliza Yohana**

Pavilion Party Planning Committee:

Emily Abbas, Honorary Event Chair, Brenton Brown, Melissa Chavas-Miller, Toni Farris, Angela Gallagher, Janelle Holmes, Katy McCaull, Anna Nalean, Jennifer Throckmorton

HOUSE INFORMATION

COVID-19 UNIQUE POLICIES

General Practices

- Guests are asked to physically distance between groups and parties as much as possible while on the premises.
- Hand sanitizing stations are available.
- Guests with COVID-19 symptoms such as a temperature of 100.4°F or higher or other symptoms, either before or during a performance, are asked to leave and exchange their tickets for a later performance.
- All guests who attend productions at The Playhouse will have reservations with contact information retained in the ticket office to facilitate contact tracing if necessary.
- Programs are accessed digitally.

Exchanges & Refunds

The Playhouse ticket exchange policy allows guests to exchange tickets for a different performance if experiencing any symptoms of illness or if they learn they have been in contact with someone who has been diagnosed with COVID-19.

Seating

- Seats are assigned the day of the performance by staff based on reservation counts and group size. Seats are assigned to ensure physical distancing within the tent. Seat requests will be reviewed but not guaranteed. Requests for wheelchair seating will be honored.
- Seating will begin 1 hour prior to curtain to reduce congregating in the tent.

Concessions

Concessions are prepackaged, individual servings, bottles, or cans.

OTHER GENERAL PRACTICES

Accessibility

The Playhouse strives to make its facility and performances accessible to all guests. Our theatres are wheelchair accessible. Service animals are welcome. ASL interpreted performances and audio description are regularly scheduled for most productions. For these and other needs, please call the ticket office with specific service requests.

Cameras

The taking of photographs and the use of recording devices are not allowed during a performance and are a violation of state and federal copyright laws.

Cancellations

If a show is cancelled due to bad weather, an email will be sent to ticket holders. Cancellations will be

noted on the phone system, website, and social media sites. Tickets for a cancelled performance may be exchanged for another performance. Please be sure the ticket office has your email information and current phone in the event a performance is cancelled. The Playhouse does not sell its contacts and does not sell or trade its email addresses.

Concessions

A variety of beverages and candy may be available for purchase. No outside drink or food are allowed in the tent. Staff reserve the right to deny alcoholic beverage service to anyone at their discretion.

Emergency Exits

Please note the exit nearest your seat location. In the event of an emergency, ushers will provide direction.

Etiquette

Latecomers will be seated at an appropriate break in the play. Disruptive, unruly guests, regardless of age, will be asked to leave. Cell phone ringers should be turned off.

Lost Items

Lost items will be held in the ticket office.

Parking

Free parking is available on streets surrounding the theatre. After 5:00 PM daily, free parking is available in the Shops at Roosevelt's east/back parking lot. Parking in the west/front Shops parking lot is restricted to Shops customers at all times. The Playhouse is not responsible for loss of any personal property left in vehicles.

Performance Content

The Playhouse does not rate subject matter as sensitivities vary from person to person. Questions about content, age appropriateness, or other aspects of the show such as strobe lights and other theatrical affects should be directed to the ticket office.

Tickets

Each audience member must occupy a seat and have a ticket, including infants.

Ticket Office Hours

The ticket office is open Noon to 3:00 PM, Tuesday through Friday. Tickets are available 24 hours a day, seven days a week, online. Ticketing fees are the same whether purchased online, by phone, or at the ticket office.

Des Moines Community Playhouse

831 42nd St, Des Moines, IA 50312

DMPplayhouse.com

Tickets & Administration: 515.277.6261

Group Sales: 515.974.5361

School Matinees: 515.974.5365

JUST PRESS PLAY.



Visit the Des Moines Symphony from the comfort of your living room. Go online to find livestreamed performances, videos from our musicians, and much more.

dmsymphony.org

BRENT ISENBERGER PHOTOGRAPHY

isenbergerphoto.com

515.360.9179



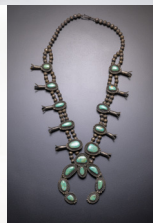
@brentisenbergerphotography



@isenbeephoto



@photoizy



The Playhouse
receives funding
support from



Support for the
Playhouse is
provided by

IOWA ARTS COUNCIL

IOWA DEPARTMENT OF CULTURAL AFFAIRS



National
Endowment
for the Arts

Playhouse
partners include



Board of Directors

Steve Schaaf, President,
Community Volunteer
Barbara C. White, President-Elect,
Workspace, Inc.
Sally Cooper Smith, Secretary,
Cooper Smith & Company
Meyer Lehman, Treasurer,
EMC Insurance Companies

Nick Andersen, *Nationwide Insurance*
Shashank Aurora, *Des Moines*
Public Schools

Robert L. Culbert, *US Bank*
Scott Gire, *Oasis, A Paychex® Company*
Tyler Hackman, *Meredith Corporation*
Tony Jones, *Grinnell State Bank*
Joanna Lowe, *Wells Fargo*
J.P. Singh, *eWay Corporation*
Linda Westergaard, *BHHS First Reality*

Advisory Council

Pamela Bass-Bookey	Peter Hedges
Jon Batesole	Donn Hutchins
Joanne Brown	Donald H. Kagin, Ph.D.
Judy McCoy Davis	Gerard Neugent
Allison Engel	Mary Urban
Suzanne Engman	Bob Veenstra
Tom Goldman	Sandra Windsor

Staff

David R. Kilpatrick, *Executive Director*
Katy Merriman, *Artistic Director*

Administration

Ryan Crane, *Director of Philanthropy*
Lee Ann Bakros, *Marketing & Public Relations Director*
Robin Spahr, *Education Director*
Mary Hofer, *Finance*
Jessica Van Essen, *Office Administrator*
Debbie Jacobson, *Ticket Office Manager*
Jada Smith, *Ticket Office*
Katy McCaull, *Intern*
Patrick Carew, *Education Intern*
Maren Grant, *Education Intern*
Julianne Unga, *Education & Technical Intern*

Production

Angela Lampe, *Associate Artistic Director*
Tim Harris, *Associate Technical Director*

Performance Staff

Lindsey Ballard, Elissa Johnson, Cherie Moen, Jada Smith, *House Managers*



THE PLAYHOUSE

Education Staff

Janet Casson
Melissa Chavas-Miller*
Jenna Darsee
Tali Eisenstadt
Anne Frett
Robin Breen Fulton*
Sarah Grant
Nate Jorgensen
Taylor Layden
Brett Spahr
Kim Van Haecke
Sarah Beth Weinberg
Anna Zimney

*Master Teacher

PIPs (Pre-Intern Program)

Crey Abbas
Alexander Baker
Isabelle Baker
Kristin Coons
Caitlyn Dean
Audrey Frett
Katelyn Gallagher
Grace Harvey
Teddi Karnes
Paige Olson
Greta Paulsen
Claire Riesberg
Lulu Rongerude
Ridge Rutherford
Ashley Scarbrough
Evie Smith
Lily Spahr
Madeline Streaker-Seay
Aaliyah Trimble
Eliza Tutty
Ashlyn Yu



Tassel Ridge® Iowa Candleglow® White ...Simply Extraordinary®



Midwest
Wine Review



Tassel Ridge®



WINERY

Iowa Candleglow® White is a dry, fruity white with pineapple, pear, melon, and apricot notes on the nose and palate and a finish that hints of green apple. Serve it chilled with fish, chicken, or lightly seasoned pork, or just sip it by itself.

1681 220th St., Leighton, IA 50143
between Pella and Oskaloosa on Hwy. 163

641.672.WINE (9463) • www.tasselridge.com

Tassel Ridge wines are sold at the Winery and over 450 retailers in Iowa. For a complete list of retailers visit www.tasselridge.com/retail.

Tassel Ridge Wines...Simply Extraordinary



THE
DIFFERENCE BETWEEN
ACCOUNTS
— and —
RELATIONSHIPS

I've always enjoyed getting to know people and building relationships with them. It's why I love being a Private Banker at Bankers Trust. Relationships are the cornerstone of Private Banking and I spend a lot of time talking with clients, learning about them and making sure they know they can rely on me. Our team strives to anticipate your banking needs and connect you to financial solutions that help you make the decisions that matter most to you. You can count on personalized service and quick, local decision-making. If you are ready to experience the Bankers Trust Difference through Private Banking, give us a call.

Rebecca Moomey, Vice President - Private Banking

BANKING | LENDING | WEALTH MANAGEMENT

BankersTrust.com
(515) 245-2833



BankersTrust.
Member FDIC