

LOVE LETTERS

By A.R. Gurney

Director:
Katy Merriman

Scenic Designer:
Alex Snodgrass

Costume Coordinator:
Jessica Van Essen

Properties Designer:
Angela Lampe

Stage Manager:
Abby Kilpatrick

Technical Director:
Nate Lawrence-Richards

Artistic Director:
Katy Merriman

Technical Assistant:
Jarod Holcomb

Scene Painting:
Abby Kilpatrick, Alex Snodgrass, Cecelia Talley, Josie Talley, Rachel Talley

Run Crew: **Paige Berry**

Sound Engineer:
Tim Harris

Master Electrician:
Virgil Kleinhesselink

Presented without intermission.

Presented through special arrangement with Dramatists Play Services Inc., New York.



THE PLAYHOUSE

515.277.6261

DMPlayhouse.com

Cast Notes

Dani Boal & Bobby Nalean: June 12, 18, 20, & 24



Dani Boal counts among her Playhouse credits *Ragtime* (Mother), *Mary Poppins* (Mary Poppins), and *Les Misérables* (Eponine). Other area credits include *Company* (Susan) at Iowa Stage, and *Guys & Dolls* (Sarah Brown) and *Disney's Beauty and the Beast* (Belle), both at Urbandale Community Theatre. She has received The Playhouse Dionysos Award and the Cloris Award for outstanding performances. She is enjoying her new role as stay-at-home mom to her son, Everett.



Bobby Nalean is a coordinator at Des Moines Area Community College. His stage credits include *Silent Sky* (Peter Shaw, Dionysos Award nominee), *Les Misérables*, *Fiddler on the Roof*, and *The Cat in the Hat* (Cat) at The Playhouse, *Into the Woods* (Narrator/Mysterious Man) at Theatre Simpson, and *Oliver!* (Fagin) at Ogden (IA) Community Theater, among others. Bobby enjoys traveling the world with his wife, Anna.

Gina Gedler & Steve Berry: June 13, 17, 21, 26, & 28



Gina Gedler has numerous stage credits with The Playhouse including *Steel Magnolias* (Ouiser Boudreaux, Dionysos Award winner), *Chicago* (Velma Kelly), *Guys & Dolls* (Sarah Brown), *Gypsy* (Mama Rose), *Into the Woods* (Cinderella in 1991, Witch in 2015), *Little Shop of Horrors* (Audrey), and *Les Misérables* (Madame Thenardier). When she is not doing theater, she enjoys singing with her music combo and other local big bands. She just celebrated 40 years with her husband, Mike, and together they have a great son, Brandon.



Steve Berry made his Playhouse debut in 1974's *Jabberwock*. Other Playhouse credits include *Les Misérables* (Jean Valjean, Dionysos Award winner), *Chicago* (Billy Flynn), *West Side Story* (Tony), *Jesus Christ Superstar* (Jesus), and *Guys & Dolls* (Sky Masterson). Other theater credits: *Hair* (Berger), Drake University and StageWest, and *Prelude to a Kiss* (Taylor), Santa Clarita (CA) Repertory Theater. Steve is a graduate of Drake University and Drake Law School.

Kellie Kramer & Micheal Davenport: June 14, 19, 25, & 27



Kellie Kramer received Playhouse Dionysos Awards for Outstanding Performance by an Actress for her roles in *Mamma Mia!* (Donna Sheridan), *The 39 Steps*, and *A Streetcar Named Desire* (Blanche DuBois). Other area stage credits include *One Flew Over the Cuckoo's Nest* (Nurse Ratched) at The Playhouse and Diana in *Next to Normal* at StageWest. Kellie is the host of the Emmy-nominated *Iowa Outdoors* on Iowa PBS and a project manager for Accenture.



Micheal Davenport is a local theatre artist with training from Grand View University and Chicago's Second City and ImprovOlympic theatres. His shows include *Billy Elliot* (Dad), *Misery* (Paul Sheldon, Dionysos Award winner), *12 Angry Men* (Juror #10), and *Red* (Mark Rothko) at The Playhouse in addition to many other area performances. Micheal is Roosevelt High School's theatre arts teacher, drama director, and head IHSSA Speech coach. He and his wife, Renée, have a one-year-old, Forrest.

ROUNDING THIRD

By Richard Dresser

July 10-26, 2020

Director:

David R. Kilpatrick

Scenic Designer:

Alex Snodgrass

Costume Designer:

Jessica Van Essen

Soundscape Designer:

Steve Taft

Properties Designer:

Angela Lampe

Stage Manager:

Paige Berry

Technical Director:

Nate Lawrence-Richards

Artistic Director:

Katy Merriman

Technical Assistant:

Jarod Holcomb

Scene Painting:

Alex Snodgrass, Cecelia Talley, Josie Talley, Rachel Talley

Sound Engineer:

Tim Harris

Master Electrician:

Virgil Kleinhesselink

*Presented without
intermission.*

*Presented through special
arrangement with The
Dramatic Publishing
Company, Woodstock, IL.*



THE PLAYHOUSE

515.277.6261

DMPlayhouse.com

Cast Notes



Chris Ennis (*Don*) is familiar to Playhouse audiences from *Tinker Bell* (Smee), *Disney's Freaky Friday One Act* (Mike) and *Catch Me If You Can* (Carl Hanratty, for which he received a Dionysos Award nomination for Outstanding Performance). He has directed many plays at theatres and churches across the country. An afternoon show host for Life 107.1, Chris likes traveling the world and playing PUBG (PlayerUnknown's Battlegrounds) with his family. He and his wife, Melinda, have five children.



Nathan Jorgensen (*Michael*) grew up at The Playhouse, first appearing on stage in 2007 and, as a teen, assisting in classrooms. He now directs and stage manages numerous Playhouse productions and teaches in the theatre's education department. He co-directs HOPE! Drama Troupe. Nate is a speech and theatre teacher at Waukee High School where he has directed a number of productions including *Peter and the Starcatcher* and *The Laramie Project*.



**MUCH OF THE BASEBALL EQUIPMENT IN TODAY'S
PERFORMANCE IS ON LOAN FROM THE IOWA CUBS.**

FLEX Four Your Playhouse!

We're flexing our creative muscle to get you back INSIDE The Playhouse!
Get an incredible deal with our Flex Four ticket subscription.

**Get Flexible
Savings
with a Flex
Four Season
Ticket!**



- **You enjoy four flexible ticket vouchers**—attend four shows, two shows with your boo, one show with three friends, you get the idea—and **save 15% off single tickets!**
- The Playhouse gets your **much needed support** until we're back (inside) and stronger than ever!
- **Risk-free!** Have to cancel later? Simply request a refund or credit.
- **Make an investment in YOUR community Playhouse today with a Flex Four subscription.**

#TheShowWillGoOn

Tickets at **DMPlayhouse.com**



Co-Director:
Michael Bundy II

Co-Director:
Katy Merriman

Scenic Designer:
Alex Snodgrass

Costume Designer:
Angela Lampe

Properties Designer:
Angela Lampe

Stage Manager:
Abby Kilpatrick

Assistant Stage
Manager:
Caitlyn Dean

Technical Director:
Nate Lawrence-Richards

Artistic Director:
Katy Merriman

Technical Assistant:
Jarod Holcomb

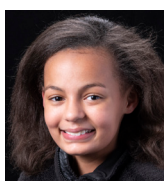
Sound Engineer:
Tim Harris

*Presented without
intermission.*

*Presented through
special arrangement with
Playscripts, Inc.*


THE PLAYHOUSE
515.277.6261
DMPlayhouse.com

Cast Notes



Gbomi Kayode (*Violet*) is familiar to audiences from *James and the Giant Peach* and *The Best Christmas Pageant Ever* (Maxine) at The Playhouse, *Seussical the Musical* (Yertle the Turtle) and *You're a Good Man, Charlie Brown* (Schroeder) at Des Moines Young Artists' Theatre and *Annie* (July) at Urbandale Community Theatre. Gbomi is a seventh grader at McCombs Middle School, Des Moines. When not at the theatre or school, she enjoys baking and spending time with friends and family.



Peter Dean (*Narrator/Billy-the-Bully/Zeus*) counts among his numerous Playhouse shows *The Wizard of Oz* (Cowardly Lion) and *How I Became a Pirate* (Sharktooth). He is a member of the Friday Funday Playhouse gang and was a recipient of a 2017 Volunteer of the Year Dionysos Award. He was assistant director for The Playhouse production of *A Christmas Story*, *The Musical*. Peter and his wife, Melody, have three daughters, Riley, Caitlyn, and Kenzie.



Caitlyn Dean (*Understudy Mom/Athena/Connie-Can't-Do/Mrs. Waldo*) is a junior at Roosevelt High School, Des Moines. Her past Playhouse appearances include *Disney's The Little Mermaid*, *Meredith Willson's The Music Man*, *Tales of a Fourth Grade Nothing* (Sheila), and *Chitty Chitty Bang Bang*. She has also volunteered on lights and sound crews at The Playhouse and is a member of the theatre's pre-intern program (PIP). In her free time, she enjoys reading.



Hudson Pulver (*Freddy/Owl*) made his Playhouse debut as John in *Tinker Bell*. He played Ralphie Parker in *A Christmas Story* at the Ankeny Community Theatre. Hudson is in sixth grade at Bergman Academy, Des Moines, where his favorite class is math. He has fun playing with friends; mountain biking; traveling with family to places such as Key West, Belize, Portugal, New York City, and Vail; and watching Broadway shows with *Beetlejuice* being a recent favorite.



Jada Lynne Smith (*Mom/Athena/Connie-Can't-Do/Mrs. Waldo*) has grown up at The Playhouse, making her debut in 2005 as Gladys Herdman in *The Best Christmas Pageant Ever*. Her other Playhouse shows include *Annie*, *Hairspray* (Little Inez), *Fiddler on the Roof* (Chava), *Ragtime*, and the theatre's 100th anniversary gala show. Jada most recently was the assistant stage manager for *The Diary of Anne Frank*. She received her A.A. degree in liberal arts from Des Moines Area Community College this spring.

YOUTH WORKSHOP

Directly following today's
performance of *Miss Electricity*
Ages 5 & up • \$5.00 per participant

Kids, join us after today's show for a fun, 45-minute theatre game workshop. We'll play Playhouse classroom favorites, such as *Frogger*, *Join the Scene*, and more, all adapted to accommodate social distancing. The focus will be on games that use our bodies rather than our voices, for those who wish to wear a mask.

THE ROOMMATE

By Jen Silverman

July 31-Aug. 16, 2020

Director/Sound Designer:

Katy Merriman

Scenic Designer:

Alex Snodgrass

Costume Designer/
Properties Designer:

Angela Lampe

Lighting Designer:

David R. Kilpatrick

Sound Engineer:

Tim Harris

Stage Manager:

Paige Berry

Master Electrician:

Virgil Kleinhesselink

Technical Director:

Nate Lawrence-Richards

Artistic Director:

Katy Merriman

*Presented without
intermission.*

The Roommate is presented
by arrangement with
Concord Theatricals on
behalf of Samuel French Inc.,
concordtheatricals.com

The Roommate was
produced by Williamstown
Theatre Festival in July
2017, Mandy Greenfield,
Artistic Director. World
premier in the 2015
Humana Festival of New
American Plays at Actors
Theatre of Louisville. The
Roommate was developed
in part with assistance
from SPACE on Ryder Farm
(spaceonryderfarm.com).



THE PLAYHOUSE

515.277.6261

DMPlayhouse.com

Cast Notes



Jodi Jinks (Robyn) is an accomplished actor, director, and teaching artist. She appeared in *Blood Brothers* on Broadway and the National Tour of *Titanic*, as well as numerous regional theatre productions. In 2008 she founded a devised community engagement program called ArtsAloud which has developed theatre performances in shelters, recovery centers, jails, and prisons. Currently ArtsAloud is partnered with Des Moines Area Community College where Jodi teaches theatre and various courses offered at Iowa prisons.



Laura Sparks (Sharon) is familiar to Playhouse audiences from *Silent Sky* (Annie Cannon), *Ragtime* (Emma Goldman) and *The Miraculous Journey of Edward Tulane* (The Traveler). She appeared in StageWest's production of *My Name is Asher Lev*, for which she was nominated for a Cloris Award, and as Chelsea in Tallgrass Theatre's *On Golden Pond*. Laura is a cantorial soloist at the Temple B'nai Jeshurun and a singer with the Java Jews klezmer band.

Voiceovers: **Bobby Nalean, Emma Wellman**

FLEX Four Your Playhouse!

We're flexing our creative muscle to get you back INSIDE The Playhouse!
Get an incredible deal with our Flex Four ticket subscription.

**Get Flexible
Savings
with a Flex
Four Season
Ticket!**



- **You enjoy four flexible ticket vouchers**—attend four shows, two shows with your boo, one show with three friends, you get the idea—and **save 15% off single tickets!**
- The Playhouse gets your **much needed support** until we're back (inside) and stronger than ever!
- **Risk-free!** Have to cancel later? Simply request a refund or credit.
- **Make an investment in YOUR community Playhouse today with a Flex Four subscription.**

#TheShowWillGoOn

Tickets at **DMPlayhouse.com**

LIVE THEATRE *Drive-In*

WELCOME!



**TUNE IN TO
89.5 FM**

Here's how to make the most of your visit



Audio

Tune to 89.5 FM to hear the actors. Starting at 6:00 PM, music will be playing to give you time to test your systems. A small number of radios are available should you have trouble with your car. For the enjoyment of others, please make sure your headlights/running lights are off.



Concessions

Prior to the performance, Playhouse staff will visit each parking spot with candy, pop, and water. Donations are accepted and greatly appreciated. You are also free to enjoy your own refreshments. Regretfully, alcohol cannot be consumed in our parking lot.



Protecting Yourself & Others

Please stick to your parking spot. If you need to leave your assigned area for any reason, please wear a mask in consideration of others. Walk within the designated walk zones (white paths).



Restrooms

Tonight's show is 99 minutes. The show is performed without intermission. Restrooms are located on the lower level of the theatre. Please wear a mask to the restroom. Staff will open the doors and sanitize the restroom after your visit. Please maintain good physical distances while waiting.

Free admission

We accept donations.

Three easy options for donating:

- **Credit/Debit.** DipJar is a secure device into which you insert your credit/debit card and your contribution is completed in 3 seconds. Want to give more than the suggested donation? Just "dip" your card again.
- **Text.** Text "drivein" to 243725.
- **Cash.**

Every contribution will be matched!

At evening's end, we ask for your patience as we direct cars out of the parking lot. Please wait your turn and be aware of your surroundings.

THANKS TO OUR SPONSORS

Edward Jones
MAKING SENSE OF INVESTING

EMC
INSURANCE

FAREWAY
MEAT & GROCERY

 **ita group**

MIDAMERICAN
ENERGY COMPANY

Matching Funds made possible by:

Susan & Mark Alexander
James Arthur
Jim & Jeanella Arthur
Steve & Constance Beasley
Terry Besser
Virginia Cameron
Linda Dawe
Wickie Dawe
Richard & Dawn Durham
Scott & Vicky Durham
Katherine Farris
Terry & Angela Gallagher
Janice Hintz
Mary James
Betsy & Carlos Jayne
Barbara John
Dr. James & Mary Ellen Kimball
Julie & Marshall Linn III
Mark & Holly Lyons
David & Anne Merschman
Jane E. Meyer
Dick & Sharon Montgomery
Cynde Pool
Darlene & Mark Pullen
Jane Punke
Peter & Rita Reed
Shane & Elisabeth Sandersfeld
Renee & Steve Schaff
Sehgal Foundation
Veena & Jay Sehgal
Phyllis Seim
Linda Shroufe
Stan & Jane Sondall
Jan & Layton Stump
Kay Thornton
Maureen Roach Tobin & Terrence M. Tobin Endow
Iowa Fund
Paula Toms
John & Maryann Vedder
Les & Judy Watts