

# *Standing* OVATION

THIS PRODUCTION  
IS GENEROUSLY  
SPONSORED BY



PRESENTED BY  
David R. &  
Barbara Kilpatrick



## with their eyes:

September 11th: The View from a  
High School at Ground Zero

**SEPTEMBER 11, 2021**



**#DMPlayhouse**



# HOPE!

DRAMA  
TROUPE

HOPE! Drama Troupe is a group of 20 middle school and high school youth whose mission is to end child abuse and neglect and strengthen families in Polk County.

To book the group for your school or organization, contact [hopedrama@dmplayhouse.com](mailto:hopedrama@dmplayhouse.com).



THE PLAYHOUSE

# Let's Make a Scene!

"She is LOVING her classes and we are seeing such **growth in her confidence and so much JOY.** It warms our hearts!"



Theatre classes and camps for Pre-K through grade 12. Scholarships available. Register online at



THE PLAYHOUSE

[DMPlayhouse.com](http://DMPlayhouse.com)

Opening September 11, 2021  
Closing September 11, 2021

Des Moines Community Playhouse Presents in the John Viars Theatre

***with their eyes:***  
***September 11th: The View from a  
High School at Ground Zero***

Adapted from WITH THEIR EYES. © 2002 by Annie Thoms (on introduction and editing), Taresh Batra, Anna Belc, Marcel Briones, Catherine Choy, Tim Drinan, Ilena George, Shanleigh Jalea, Lindsay Long-Waldor, Liz O'Callahan, Chantelle Smith, Michael Vogel, Carlos Williams, Christopher M. Yee & New York (City) Board of Education (on text)

Presented by **Principal**  
Sponsored by **David R. & Barbara Kilpatrick**

Director: **Nathan Jorgensen**  
Design Team: **Jenna Darsee, Nathan Jorgensen, Robin Spahr, David A. VanCleave**  
Stage Manager: **Jenna Darsee**  
Dramaturg: **David A. VanCleave**  
Playhouse Artistic Director: **Katy Merriman**

Cast

\*Indicates Playhouse Debut

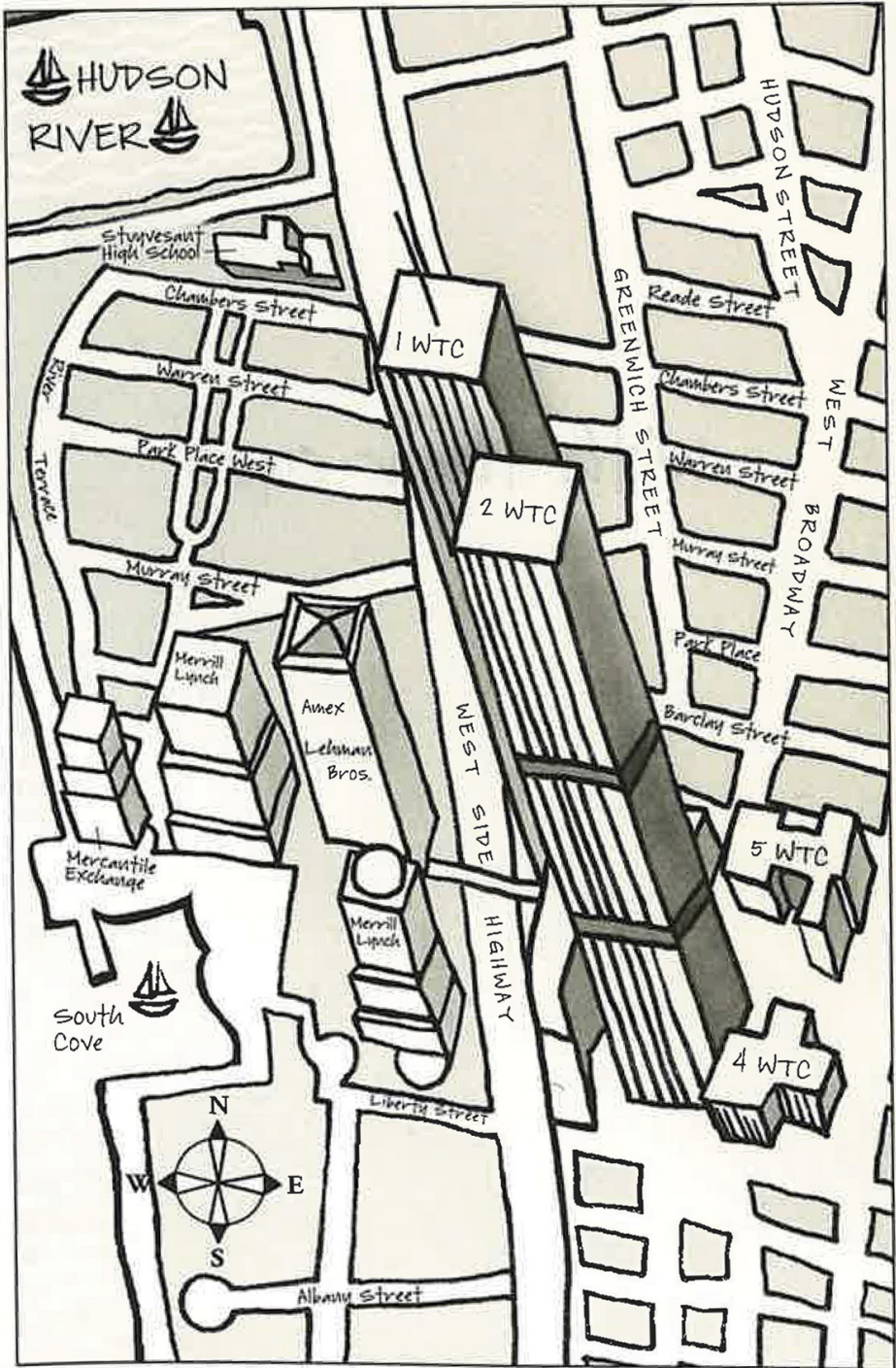
**Jack Andersen**  
**Anna Briggeman\***  
**Lily Briggeman\***  
**Ryan Henzi**  
**Kylie Jorgensen\***  
**Emma Malmberg\***  
**Gus McEntaffer**

**Sergio E. Puente\***  
**Claire Riesberg\***  
**Elyse Shaw\***  
**Caethen Stocker**  
**Addison Tullis**  
**Gennie Weis\***  
**Catie Wilwerding\***

*with their eyes: September 11th: The View from a High School at Ground Zero* is presented with a 15-minute intermission.

*with their eyes: September 11th: The View from a High School at Ground Zero* is presented through special arrangement with HarperCollins Publishers.

This production is dedicated to first responders who serve the community.  
All proceeds will be donated to appropriate organizations who support first responders.



Used by permission of HarperCollins Publishers.

## *with their eyes*

David A. VanCleave, Dramaturg

Where were you on September 11, 2001?

97% of Americans say they remember exactly where they were when the first plane hit at 8:46 AM EDT. We recall that morning with extraordinary and specific details, describing the classroom or office we were in, what we were wearing, who else was in the room, etc. These intensely vivid memories are known as flashbulb memories, events so impactful our memories feel like photographs. Flashbulb events are often centered around personal or historical trauma; September 11 was both. Memory researcher Ulric Neisser once wrote, "The details [of a flashbulb event] are the links between our own history and History. They are the place where we line up our own lives with the course of history itself."

In the weeks and months that followed the attacks, we made a vow to never forget, creating a sort of moral obligation to commit every detail of that day to memory forever. Twenty years later, we think of these memories as infallible, but recent psychology studies show that isn't the case. Flashbulb memories fade just like memories of ordinary events, they just don't *feel* that way...we remain confident in the accuracy of memories that are not necessarily accurate. For example, many recall watching the first plane hitting the North Tower live on television, but that footage was not broadcast until days later.

The students in this production were not alive in 2001. They have no 9/11 memories of their own, only facts gathered from history books and the (fallible) memories of loved ones. After our first read-through, one actor said, "I knew the facts or whatever...we talk about it every year in school... But reading this makes it feel more real." This show does not provide details on what members of the Stuyvesant community were wearing or what was hanging on the classroom walls. By using the words of more than two dozen individuals, however, it offers something greater: a portrait of people processing, a unique combination of honesty, hesitation, and healing. It gives us "uhms" and "likes." It gives us humanity.



*That* is what we must never forget.

## CAST NOTES



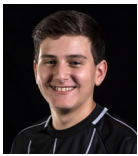
**Jack Andersen** is a sophomore at Waukee Northwest High School. He has extensive theatre experience, appearing onstage in *Ramona Quimby* at The Playhouse and *School of Rock* (James) at Des Moines Young Artists' Theatre. Backstage at DMAT, he has designed costumes for *Boy at the Edge of Everything* and worked on run crew for *13* and on sound crew for *Treasure Island*. Jack is a Playhouse PIP (Pre-Intern Program).



**Anna Briggeman** is making her Playhouse debut but has been involved with Curtain Call Kids in Grimes where she played her favorite role to date, Mirror in *Snow White*. Anna is an aspiring journalist and has a blog about the Milwaukee Brewers. In fact, she spends a lot of her time writing and reading about and watching sports of all kinds. A sophomore at Dallas Center-Grimes High School, she also enjoys singing and traveling.



**Lily Briggeman** is an eighth grader at Dallas Center-Grimes Oak View School. She enjoys reading, singing, acting, and traveling. She says one of her favorite places she's visited is Hawaii, in part because it is warmer than Iowa. Lily is making her Playhouse debut alongside her sister, Anna. She has been in shows at Curtain Call Kids in Grimes for the past four years including *The Mystery of Tollhome Manor*.



**Ryan Henzi** is familiar to Des Moines area audiences from his roles including Ralphie in *A Christmas Story the Musical*, Little Boy in *Ragtime*, and Les in *Disney's Newsies*, all at The Playhouse, and Pete Buttigieg in *Adore Us! Line* at Iowa Stage Theatre Company. When not singing and dancing, Ryan likes playing video games and volunteering at Blank Park Zoo. Ryan is a junior at Ankeny Centennial High School.



**Kylie Jorgensen** is in eighth grade at Southview Middle School in Ankeny. She enjoys all the arts, and sings, dances, plays percussion, draws and watches animation, and reads. Kylie has been in several Performance Academy classes at The Playhouse, playing Tweedle-Dum in *Alice in Wonderland*, Neleus in *Disney's Mary Poppins Jr.*, Kate in *Annie Jr.*, and a Vendor in *Aladdin Jr.*



**Emma Malmberg** has been active in drama at Dallas Center-Grimes High School where she is a junior, stage managing *Once Upon a Mattress* and *Elephant Graveyard* and appearing onstage as Olive's Mom in *The 25th Annual Putnam County Spelling Bee*. At The Playhouse, she has taken the Teen Improv class. Emma likes all things Broadway. When not singing, acting, or in school, she works at Fareway.



**Gus McEntaffer** was last seen on The Playhouse stage as Tootles in *Tinker Bell* and Rocky/Pet Shop Boy in *Judy Moody & Stink: The Mad, Mad, Mad, Mad Treasure Hunt*. A seventh grader at Waukee Middle School, Gus enjoys playing Dungeons and Dragons (D&D) and gaming.



**Sergio E. Puente** is a recent graduate from Lakota West High School in West Chester, OH, where he played Joseph Pulitzer in *Disney's Newsies*. He has an eight-year contract with the U.S. Navy where he will be training to be a machines technician (nuclear engineering). A nerd for Marvel comics and movies, Sergio loves to meet new people and audition for anything.



**Claire Riesberg** is a freshman at Des Moines Roosevelt High School. She swims competitively for Roosevelt, plays guitar, paints, draws, designs clothes, and does a bit of amateur photography. Claire is a Playhouse PIP (Pre-Intern Program) making her stage debut and says her favorite Broadway musical is *Annie*.

## CAST NOTES



**Elyse Shaw** is a junior at Indianola High School. She plays cello in the Iowa All-State Orchestra, Des Moines Youth Symphony, and her high school orchestra, and has competed in Individual State Speech Contest. At school, she played Lauren in the comedic one-act play *Anne-Arky*. This is her Playhouse debut.



**Caethen Stocker** made his Playhouse debut as Slightly, one of the Lost Boys, in *Tinker Bell*. At Curtain Call Kids in Grimes, he has played Prince Sebastian in *The Royal Quest* and And (the eighth dwarf) in *The Mystery of the Seven Dwarfs*. An eighth grader at Dallas Center-Grimes Oak View School, Caethen likes playing baseball and basketball as well as dancing and singing.



**Addison Tullis** has been on multiple area stages including The Playhouse (100th Anniversary Show, *Disney's Freaky Friday One Act*), Des Moines Young Artists' Theatre (*Patrice, 13*; *Linus, You're a Good Man, Charlie Brown*), and CAP (*Small Alice, Disney's Alice in Wonderland Jr.*; *Jane, Disney's Mary Poppins Jr.*). Addie writes music and is learning to play guitar. A sophomore at Ankeny Centennial High School, she is on the cheer squad.



**Gennie Weis** is a Johnston Middle School eighth grader who likes acting, baking, sewing, and biking. She has taken Playhouse theatre classes including Kids Invent Theatre and Two-Day Play. This is her Playhouse debut.



**Catie Wilwerding** has taken Teen Improv at The Playhouse and is now making her stage debut. She has danced in Iowa Dance Theatre's *The Nutcracker* the past four years with her favorite role to date being Maid. Her interests include photography and reading. Catie is in eighth grade at Holy Trinity School.



**Nathan Jorgensen** (*Director*) is a teacher at Waukee High School and director with Waukee Theatre Arts where his credits include *Peter and the Starcatcher*, *The Laramie Project*, and *Much Ado About Nothing*. At The Playhouse, he has directed *The Lion, the Witch, and the Wardrobe*, among other shows, and is co-director with Jenna Darsee and David A. VanCleave of HOPE! Drama Troupe. Nate is working on his master's degree in theatre directing at Roosevelt University, Chicago.



**Jenna Darsee** (*Stage Manager*) is a graduate of Luther College, Decorah, with a B.A. in art with an emphasis in print making and art history. She teaches K-5 art at Irving Elementary, Indianola, and is marketing chair and co-conference chair for the upcoming Art Educators of Iowa conference. A former Playhouse intern, Jenna joined the theatre's education staff more than five years ago. She is a director, along with Nathan Jorgensen and David A. VanCleave, of HOPE! Drama Troupe.



**David A. VanCleave** (*Dramaturg*) earned his B.F.A. theatre arts/directing program from The Theatre School at DePaul University (Chicago) where his credits included *Flow My Tears the Policeman Said* (dramaturg), *Closer* (director), and *Unspeakable: A Gay Future Project* (co-writer/performer). His Playhouse directing credits include *Cabaret*, *The Laramie Project*, *Little House Christmas at Plum Creek*, and *Tales of a Fourth Grade Nothing*. David is a director of HOPE! Drama Troupe along with Nathan Jorgensen and Jenna Darsee.



**Katy Merriman** (*Artistic Director*) has been an active member of the local theatre community since moving to Des Moines in 2013. Her Playhouse directing credits include the recent co-production with Pyramid Theatre Company, *A Love Offering* (co-directing with Tiffany Johnson), *Some Enchanted Evening*, *Stuart Little, I and You*, *The Roommate*, *Love Letters*, and *Elephant & Piggie's "We Are in a Play!"* Prior to becoming artistic

## CAST NOTES

director, Katy appeared on The Playhouse stage in shows including *Into the Woods* (Cinderella), *Les Misérables* (Cosette), *Completeness* (Molly), and *Legally Blonde the Musical* (Elle Woods) and was the musical director for The Playhouse Performance Academy from 2016 to 2018. Katy worked with Iowa Stage Theatre Company as a resident artist where her performance credits

include *The Glass Menagerie* (Laura) and *Our Town* (Emily). She also directed their 2018 production of *Fun Home*. Prior to her time in Des Moines, Katy worked with numerous theatres as a performer, director, and administrator. She has a Bachelor of Music from Butler University in Indianapolis, IN.



**Junie B.  
in Jingle Bells,  
Batman Smells!**

**KATE GOLDMAN CHILDREN'S  
THEATRE IN THE  
JOHN VIARS THEATRE**

Wowie wow wow!  
**NOV. 5-14, 2021**

 **THE PLAYHOUSE**  
TICKETS AT  
[DMPlayhouse.com](https://DMPlayhouse.com)



**THE 2021-22 Season**

**Cabaret**  
SEPT. 10-26, 2021

**Escaping the Labyrinth**  
OCT. 15-24, 2021  
AGATHA CHRISTIE'S

**Murder on the Orient Express**  
FEB. 4-20, 2022

**Singin' in the Rain**  
MAR. 25-APR. 10, 2022

**Calendar Girls**  
JUNE 3-19, 2022  
ROALD DAHL'S

**Matilda The Musical**  
JULY 8-31, 2022

**Family Holiday Classic**  
**The Sound of Music**  
DEC. 3-19, 2021

IN THE KATE GOLDMAN CHILDREN'S THEATRE

**Junie B. in Jingle Bells,  
Batman Smells!**  
NOV. 5-14, 2021

**Don't Let the Pigeon  
Drive the Bus! The Musical!**  
JAN. 7-23, 2022

**Charlotte's Web**  
MAR. 4-20, 2022

**Pippi Longstocking**  
APR. 22-MAY 8, 2022

 **THE PLAYHOUSE**  
TICKETS AT: [DMPlayhouse.com](https://DMPlayhouse.com)



## PRODUCTION CREWS

Technical Director – AV: **Tim Harris**

Set Construction: **Krister Strandkov, Rachel Trimble**

Scenic Painter: **Jay Michael Jagim**

Sound Board Operator: **Tim Harris**

Light Board Operator: **Jenna Darsee**

Projections Operator: **David A. VanCleave**

*with their eyes* Photographer: **Brandon James**

Playhouse Ambassadors: **Judy Blessington, Mary Bricker, Annette Duffy, Alma Hackbart, Pat Henson, Jolene Huen, Jean Leibold, Sunny Liston, Mary Marshall, Mark Morrison, Becky Scholtec, Mary Whisenand, Sherill Whisenand**

Playhouse Partners: **Dani Boal, Mary Bricker, Edward Corpus, Peter Dean, Denise Forney, Anne Frett, Pam Gabby, Michael Howland, Jill Lippincott, Rebecca Masucci, Greg Millar, Mark Morrison, Charlie Reese, Maxwell Schaeffer, Jackie Schmillen, Tony Tandeski, Josh Visnapuu, Eva Williams**

Playhouse Audition Crew: **Toni Farris, Brandon Record**

Playhouse Videographer: **David R. Kilpatrick**

Playhouse Photographers: **Steve Gibbons, Brent Isenberger**

Playhouse Historians: **Mark Morrison, Lloyd Von Hagen**

*WITH THEIR EYES* SPECIAL THANKS

**First Responders, Jay Michael Jagim, Alex Snodgrass, 2001 Stuyvesant students, Waukee High School**



*The*  
**SOUND  
of  
MUSIC**

**AUDITIONS**  
ADULTS: 1 PM, SAT, OCT. 2, 2021  
YOUTHS: 5 PM, SUN, OCT. 3, 2021  
PERFORMANCES: Dec. 3-19, 2021  
PRESENTED IN THE JOHN VIARS THEATRE  
Directed by Katy Merriman

**CAST NEEDS:**  
**MALE-IDENTIFYING:** 7 ages 16-80;  
3 ages 8-18; any race or ethnicity  
**FEMALE-IDENTIFYING:** 9 ages 16-80;  
5 ages 8-18; any race or ethnicity  
**ENSEMBLE:** Ages 16 & up, any race or ethnicity

 **THE PLAYHOUSE**  
[DMPlayhouse.com/Audition](http://DMPlayhouse.com/Audition)

## Did You Know?

The actors and crew members of today's performance are volunteers who live in greater Des Moines — people just like you who love theatre!



Do you have time and talent to share?  
Grab a flyer in the lobby or visit  
**DMPlayhouse.com**

 **THE PLAYHOUSE**

# HOUSE INFORMATION

## COVID-19 UNIQUE POLICIES

- Guests are required to wear face coverings while inside the building.
- Hand sanitizing stations are located throughout the lobbies for public use.
- Guests with COVID-19 symptoms such as a temperature of 100.4°F or higher or other symptoms, either before or during a performance, are asked to leave and exchange their tickets for a later performance.
- All tickets will be refunded or exchanged without fee upon request.
- Programs are accessed digitally.

## GENERAL PRACTICES

### Accessibility

The Playhouse strives to make its facility and performances accessible to all guests. Our theatres are wheelchair accessible. Service animals are welcome. Assisted listening devices are available in the John Viars Theatre. If your hearing aid has a T-coil, toggle to that setting to receive the audio signal directly without any headset or other equipment needed. ASL interpreted performances and audio description performances are available upon request. For these and other needs, please call the ticket office with specific service requests.

### Cameras

The taking of photographs and the use of recording devices are not allowed during a performance and are a violation of state and federal copyright laws.

### Cancellations

If a show is cancelled due to bad weather, an email will be sent to ticket holders. Cancellations will be noted on the phone system, website, and social media sites. Tickets for a cancelled performance may be exchanged for another performance. Please be sure the ticket office has your email information and current phone in the event a performance is cancelled. The Playhouse does not sell its contacts and does not sell or trade its email addresses.

### Concessions

A variety of beverages and candy may be available for purchase and are allowed in auditoriums. No outside drink or food are allowed. Staff reserve the right to deny alcoholic beverage service to anyone at their discretion.

### Elevator

An elevator between levels is located at the east end of the building.

### Emergency Exits

Please note the exit nearest your seat location. In the event of an emergency, guest services staff will provide direction.

### Etiquette

Latecomers will be seated at an appropriate break in the play. Lobby chimes are sounded five minutes before curtain as well as the close of intermission. Disruptive, unruly guests, regardless of age, will be asked to leave. Cell phone ringers should be turned off.

### Lost Items

Lost items will be held in the ticket office.

### Parking

Free parking is available in The Playhouse lots and on streets surrounding the theatre. After 5:00 PM daily, free parking is available in the Shops at Roosevelt's east/back parking lot. Parking in the west/front Shops parking lot is always restricted to Shops customers. The Playhouse is not responsible for loss of any personal property left in vehicles.

### Performance Content

The Playhouse does not rate subject matter as sensitivities vary from person to person. Questions about content, age appropriateness, or other aspects of the show such as strobe lights and other theatrical affects should be directed to the ticket office.

### Performance Schedule

The regular John Viars Theatre performance schedule is 7:30 PM Wednesdays through Saturdays and 2:00 PM Sundays. The regular Kate Goldman Children's Theatre performance schedule is 7:00 PM Fridays, and 1:00 PM and 4:00 PM Saturdays and Sundays. The Family Holiday Classic performance schedule is 7:00 PM Wednesdays through Fridays, and 1:00 PM and 5:00 PM Saturdays and Sundays. All times are subject to change.

### Tickets

Each audience member must occupy a seat and have a ticket, including infants.

### Ticket Office Hours

The ticket office is open Noon to 5:00 PM, Tuesdays through Fridays, and 90 minutes prior to performances. Tickets are available 24 hours a day, seven days a week, online. Ticketing fees are the same whether purchased online, by phone, or at the ticket office.

## Des Moines Community Playhouse

831 42nd Street  
Des Moines, IA 50312



[DMPlayhouse.com](http://DMPlayhouse.com)

**Ticket office and  
administrative office:**  
515-277-6261

**Group sales reservations:**  
515-277-6261

**School matinee reservations:**  
515-974-5365

# PLAYHOUSE ADMINISTRATION

The Playhouse receives funding support from



Support for the Playhouse is provided by

## IOWA ARTS COUNCIL

IOWA DEPARTMENT OF CULTURAL AFFAIRS



National Endowment for the Arts

Playhouse partners include



catchdesmoines.com



### Staff

David R. Kilpatrick, *Executive Director*  
Katy Merriman, *Artistic Director*

### Administration

Ryan Crane, *Director of Philanthropy*  
Lee Ann Bakros, *Marketing & Public Relations Director*  
Robin Spahr, *Education Director*  
Mary Hofer, *Finance*  
Jada Smith, *Office Administrator/Ticket Office*  
Katy McCaull, *Ticket Office Marketing*  
Debbie Jacobson, *Ticket Office Manager*

### Production

Angela Lampe, *Associate Artistic Director*  
Jessica Van Essen, *Costume Shop Supervisor*  
Tim Harris, *Technical Director - AV*

### Performance Staff

Lindsey Ballard, Elissa Johnson, Cherie Moen, Jada Smith, *House Managers*

### Education Staff

Janet Casson	Ron Hyde
Melissa Chavas-Miller*	Nate Jorgensen
Nicole Chavas-Schwegler	Taylor Layden
Jenna Darsee	Brett Spahr*
Katie Dorrell	Kim Van Haecke
Tali Eisenstadt	Sarah Beth Weinberg
Anne Frett	Anna Zimney
Robin Breen	*Master Teacher
Fulton*	

### Pre-Intern Program (PIPs)

Crey Abbas	Lulu Rongerude
Grace Aerisolphal	Ridge Rutherford
Alexander Baker	Ashley Scarbrough
Isabelle Baker	Evie Smith
Kristin Coons	Lily Spahr
Caitlyn Dean	Madeline Streaker-Seay
Audrey Frett	Aaliyah Trimble
Katelyn Gallagher	Eliza Tutty
Grace Harvey	Ashlyn Yu
Teddi Karnes	
Paige Olson	
Greta Paulsen	
Claire Riesberg	



## THE PLAYHOUSE

### Board of Directors

Steve Schaaf, *President, Community Volunteer*  
Barbara C. White, *President-Elect, Workspace, Inc.*  
Sally Cooper Smith, *Secretary, Cooper Smith & Company*  
Meyer Lehman, *Treasurer, EMC Insurance Companies*

Nick Andersen, *Nationwide Insurance*  
Shashank Aurora, *Des Moines Public Schools*  
Robert L. Culbert, *US Bank*  
Scott Gire, *Oasis, A Paychex® Company*  
Tyler Hackman, *Meredith Corporation*  
Tony Jones, *Grinnell State Bank*  
Joanna Lowe, *Wells Fargo*  
J.P. Singh, *eWay Corporation*  
Linda Westergaard, *BHHS First Realty*

### Advisory Council

Pamela Bass-Bookey	Peter Hedges
Jon Batesole	Donn Hutchins
Joanne Brown	Donald H. Kagin, Ph.D.
Judy McCoy Davis	Gerard Neugent
Allison Engel	Mary Urban
Suzanne Engman	Bob Veenstra
Tom Goldman	Sandra Windsor

**THE**

**SHOPS**

*“Sensational!”*  
★★★★ -KATHY

*“A delightful  
romp!”*  
★★★★ -CHELSEA

*“Absurdly enjoyable!”*  
★★★★ -KRISTIN

**AT**

**ROOSEVELT**

---

*STARRING*

---

Shakti Yoga • The Cheese Shop • Iowa IV  
Be, LLC. • La Mie Bakery • Sacred Diamond  
The Juice Company • DSM Salon & Spa  
Worn • Roosevelt Barber Shop  
Pre-Natal Vision Ultrasound • Silver Fox

---

**Have you seen the Shops at Roosevelt?**

42ND STREET - JUST NORTH OF INTERSTATE 235